

Flossy 佛罗斯®卫浴  
FLOSSY SANITARY WARE

佛山市佛罗斯卫浴有限公司  
FLOSSY SANITARY WARE CO.,LTD.

地址: 广东省佛山市南海区狮山镇罗村朗沙大道26号长顺  
产业园4号厂房之一

Add: NO.1/4,Changshun Industry Area,Langsha Road NO.26,  
Luocun Shishan city,Foshan,Guangdong,China

电话/Tel: 0757-82711443 82267716

传真Fax: 0757-82711441

QQ: 419314823

www.flossyshower.com

Email: flossy8278@hotmail.com

印刷品颜色可能与实际产品颜色有差异, 以样板颜色为准。  
As a result of printing, the colors of the products listed here may be  
different from the real products, in case of which, the real product shall  
be prior.

## FLOSSY SANITARY WARE · Let's do it better

Focus on the bathroom industry only to create your "happy home".

With happy enjoyment as the brand appeal, not only with happiness as a product design and development concept, but also to infiltrate this happy idea into the fine points of business management, and infiltrate into the cooperation with each customer, seven enjoyment of the management culture, just as seven colors rainbow, and bring rainbow style smile to every employee and customer.

Mission: create a happy life and create a happy home

The core idea: the pursuit of harmony

Strategic goal: the world brand of happy bathroom life

Management philosophy: fairness, openness, justice, efficiency, practicality and humanity.

Management concept: quality as the goal, service as the aim, perfection as the ideal, harmony as the method and culture as the foundation.

Marketing concept: good faith marketing is the premise, product marketing is the key to create the brand

the purpose behavior idea: the letter is the human base, the source of music, the internal confidence, the external credibility



# CONTENTS



## SHOWER INCLOSURE SERIES

沐浴房系列

P01-88



## HANDLE SERIES

拉手系列

P89-93



## STONE SERIES

石基系列

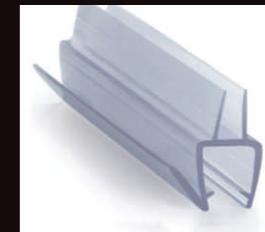
P94



## SHOWER HINGE SERIES

浴室夹系列

P95-96



## RUBBER SERIES

胶条系列

P97-98



## F-3061

产品类型：T型二门  
 规格：非标定做  
 产品材质：304不锈钢  
 产品颜色：蓝色+钛金  
 玻璃厚度：8mm/10mm

定制范围：  
 (L)1600-2400\*(W)800-1400\*(H)1900-2200

Product shape: T shape with two doors  
 Product size: Custome made  
 Product material: 304 stainless steel  
 Product color: Blue+Gold  
 Glass thickness: 8mm/10mm

Custom scope:  
 (L)1600-2400\*(W)800-1400\*(H)1900-2200



## F-3061A

产品类型：屏风两固一开  
 规格：非标定做  
 产品材质：304不锈钢  
 产品颜色：蓝色+钛金  
 玻璃厚度：8mm/10mm

定制范围：  
 (W)1200-2000\*(H)1900-2200

Product shape: Two fix with one door  
 Product size: Custome made  
 Product material: 304 stainless steel  
 Product color: Blue+Gold  
 Glass thickness: 8mm/10mm

Custom scope:  
 (W)1200-2000\*(H)1900-2200





## F-3061B

产品类型：钻石型两固一开  
规格：非标定做  
产品材质：304不锈钢  
产品颜色：蓝色+钛金  
玻璃厚度：8mm/10mm

定制范围：  
(L)800-1200\*(W)800-1200\*(H)1900-2200

Product shape: Diamond,two fix with one door  
Product size: Custome made  
Product material: 304 stainless steel  
Product color: Blue+Gold  
Glass thickness: 8mm/10mm

Custom scope:  
(L)800-1200\*(W)800-1200\*(H)1900-2200



## F-3061C

产品类型：L型外开  
规格：非标定做  
产品材质：304不锈钢  
产品颜色：拉丝法兰金  
玻璃厚度：8mm/10mm

定制范围：  
(L)800-1200\*(W)1000-1500\*(H)1900-2200

Product shape: L shape,two fix and one door  
Product size: Custome made  
Product material: 304 stainless steel  
Product color: Gold  
Glass thickness: 8mm/10mm

Custom scope:  
(L)800-1200\*(W)1000-1500\*(H)1900-2200



## F-3062

产品类型：钻石型二固一开  
规格：非标定做  
产品材质：304不锈钢  
产品颜色：白色+钛金  
玻璃厚度：8mm/10mm

定制范围：  
(L)800-1200\*(W)800-1200\*(H)1900-2200

Product shape: Diamond, two fix with one door  
Product size: Custome made  
Product material: 304 stainless steel  
Product color: White+Gold  
Glass thickness: 8mm/10mm

Custom scope:  
(L)800-1200\*(W)800-1200\*(H)1900-2200



## F-3062A

产品类型：T型二门  
规格：非标定做  
产品材质：304不锈钢  
产品颜色：白色+钛金  
玻璃厚度：8mm/10mm

定制范围：  
(L)1600-2400\*(W)800-1400\*(H)1900-2200

Product shape: T shape with two doors  
Product size: Custome made  
Product material: 304 stainless steel  
Product color: Withe+Gold  
Glass thickness: 8mm/10mm

Custom scope:  
(L)1600-2400\*(W)800-1400\*(H)1900-2200





## F-3062B

产品类型：L型两固一开  
规格：非标定做  
产品材质：304不锈钢  
产品颜色：白色+钛金  
玻璃厚度：8mm/10mm

定制范围：  
(L)800-1200\*(W)1000-1500\*(H)1900-2200

Product shape: L shape, two fix with one door  
Product size: Custome made  
Product material: 304 stainless steel  
Product color: Withe+Gold  
Glass thickness: 8mm/10mm

Custom scope:  
(L)800-1200\*(W)1000-1500\*(H)1900-2200



## F-3062C

产品类型：屏风二固一开  
规格：非标定做  
产品材质：304不锈钢  
产品颜色：白色+钛金  
玻璃厚度：8mm/10mm

定制范围：  
(W)1200-2000\*(H)1900-2200

Product shape: Two fix with one door  
Product size: Custome made  
Product material: 304 stainless steel  
Product color: Withe+Gold  
Glass thickness: 8mm/10mm

Custom scope:  
(W)1200-2000\*(H)1900-2200



## F-3063

产品类型：屏风双移（缓冲）  
规格：非标定做  
产品材质：304不锈钢  
产品颜色：白色+钛金  
玻璃厚度：8mm/10mm

定制范围：  
(W)1200-1800\*(H)1900-2200

Product shape: Both sliding door (soft close)  
Product size: Custome made  
Product material: 304 stainless steel  
Product color: Withe+Gold  
Glass thickness: 8mm/10mm

Custom scope:  
(W)1200-1800\*(H)1900-2200



## F-3064

产品类型：屏风二固一开  
规格：非标定做  
产品材质：304不锈钢  
产品颜色：法兰克金拉丝  
玻璃厚度：8mm/10mm

定制范围：  
(W)1200-2000\*(H)1900-2200

Product shape: Two fix with one door  
Product size: Custome made  
Product material: 304 stainless steel  
Product color: Gold  
Glass thickness: 8mm/10mm

Custom scope:  
(W)1200-2000\*(H)1900-2200

## F-3064A

产品类型：L型两固一开  
规格：非标定做  
产品材质：304不锈钢  
产品颜色：法兰克金拉丝  
玻璃厚度：8mm/10mm

定制范围：  
(L)800-1200\*(W)1000-1500\*(H)1900-2200

Product shape: L shape,two fix with one door  
Product size: Custome made  
Product material: 304 stainless steel  
Product color: Gold  
Glass thickness: 8mm/10mm

Custom scope:  
(L)800-1200\*(W)1000-1500\*(H)1900-2200



## F-3065

产品类型：T型二门  
 规格：非标定做  
 产品材质：304不锈钢  
 产品颜色：金拉丝/玫瑰金/钛金/枪灰/亚黑/镜光  
 玻璃厚度：8mm/10mm

定制范围：  
 (L)1600-2400\*(W)800-1400\*(H)1900-2200

Product shape: T shape with two doors  
 Product size: Custome made  
 Product material: 304 stainless steel  
 Product color: Brushed gold/rose gold/gold/gunmetal grey/matt black/silver  
 Glass thickness: 8mm/10mm

Custom scope:  
 (L)1600-2400\*(W)800-1400\*(H)1900-2200



## F-3066

产品类型：屏风一固一开  
 规格：非标定做  
 产品材质：304不锈钢  
 产品颜色：金拉丝/玫瑰金/钛金/枪灰/亚黑/镜光  
 玻璃厚度：8mm/10mm

定制范围：  
 (W)1200-1500\*(H)1900-2500

Product shape: One fix with one door  
 Product size: Custome made  
 Product material: 304 stainless steel  
 Product color: Brushed gold/rose gold/gold/gunmetal grey/matt black/silver  
 Glass thickness: 8mm/10mm

Custom scope:  
 (W)1200-1500\*(H)1900-2500



## F-3067

产品类型：屏风一固一开  
规格：非标定做  
产品材质：304不锈钢  
产品颜色：金拉丝/玫瑰金/钛金/枪灰/亚黑/镜光  
玻璃厚度：8mm/10mm

定制范围：  
(W)1200-1500\*(H)1900-2500

Product shape: One fix with one door  
Product size: Custome made  
Product material: 304 stainless steel  
Product color: Brushed gold/rose gold/gold/gunmetal grey/matt black/silver  
Glass thickness: 8mm/10mm

Custom scope:  
(W)1200-1500\*(H)1900-2500

## F-3068

产品类型：钻石型二固一开  
规格：非标定做  
产品材质：304不锈钢  
产品颜色：金拉丝/玫瑰金/钛金/枪灰/亚黑/镜光  
玻璃厚度：8mm/10mm

定制范围：  
(L)800-1200\*(W)800-1200\*(H)1900-2200

Product shape: Diamond,two fix with one door  
Product size: Custome made  
Product material: 304 stainless steel  
Product color: Brushed gold/rose gold/gold/gunmetal grey/matt black/silver  
Glass thickness: 8mm/10mm

Custom scope:  
(L)800-1200\*(W)800-1200\*(H)1900-2200





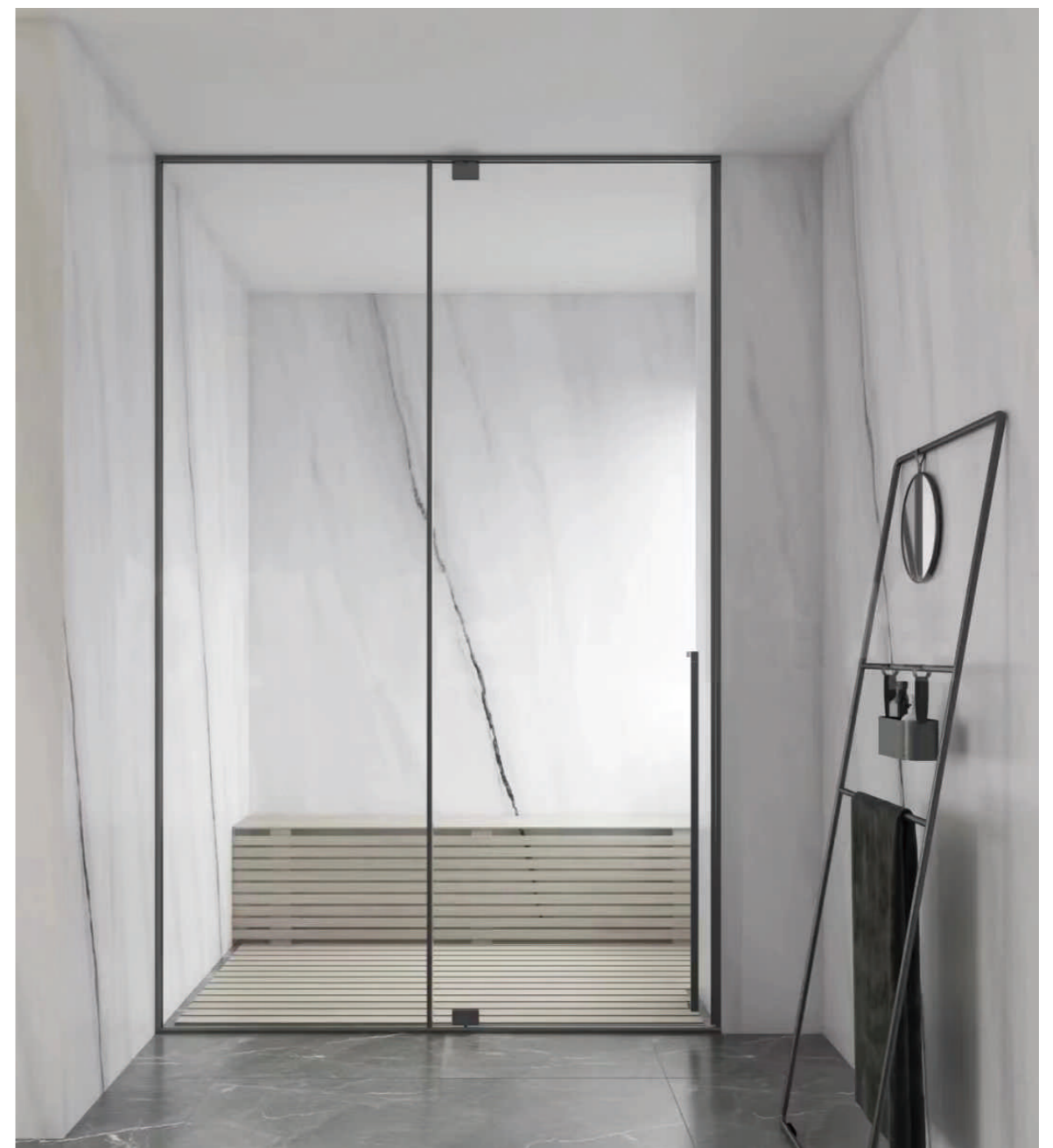
## F-3069

产品类型：屏风两固一开  
 规格：非标定做  
 产品材质：304不锈钢  
 产品颜色：金拉丝/玫瑰金/钛金/枪灰/亚黑/镜光  
 玻璃厚度：8mm/10mm

定制范围：  
 (W)1200-2000\*(H)1900-2200

Product shape: Two fix with one door  
 Product size: Custome made  
 Product material: 304 stainless steel  
 Product color: Brushed gold/rose gold/gold/gunmetal grey/matt black/silver  
 Glass thickness: 8mm/10mm

Custom scope:  
 (W)1200-2000\*(H)1900-2200



## F-3070

产品类型：屏风一固一开  
 规格：非标定做  
 产品材质：304不锈钢  
 产品颜色：金拉丝/玫瑰金/钛金/枪灰/亚黑/镜光  
 玻璃厚度：8mm/10mm

定制范围：  
 (W)1000-1500\*(H)1900-2200

Product shape: One fix with one door  
 Product size: Custome made  
 Product material: 304 stainless steel  
 Product color: Brushed gold/rose gold/gold/gunmetal grey/matt black/silver  
 Glass thickness: 8mm/10mm

Custom scope:  
 (W)1000-1500\*(H)1900-2200



## F-3071

产品类型：屏风两固一开  
规格：非标定做  
产品材质：304不锈钢  
产品颜色：金拉丝/玫瑰金/钛金/枪灰/亚黑/镜光  
玻璃厚度：8mm/10mm

定制范围：  
(W)1200-2000\*(H)1900-2200

Product shape: Two fix with one door  
Product size: Custome made  
Product material: 304 stainless steel  
Product color: Brushed gold/rose gold/gold/gunmetal grey/matt black/silver  
Glass thickness: 8mm/10mm

Custom scope:  
(W)1200-2000\*(H)1900-2200



## F-3071A

产品类型：L型两固一开  
规格：非标定做  
产品材质：304不锈钢  
产品颜色：金拉丝/玫瑰金/钛金/枪灰/亚黑/镜光  
玻璃厚度：8mm/10mm

定制范围：  
(L)800-1200\*(W)1000-1500\*(H)1900-2200

Product shape: L shape, two fix with one door  
Product size: Custome made  
Product material: 304 stainless steel  
Product color: Brushed gold/rose gold/gold/gunmetal grey/matt black/silver  
Glass thickness: 8mm/10mm

Custom scope:  
(L)800-1200\*(W)1000-1500\*(H)1900-2200



## F-3072

产品类型：单开门  
 规格：非标定做  
 产品材质：304不锈钢  
 产品颜色：金拉丝/玫瑰金/钛金/枪灰/亚黑/镜光  
 玻璃厚度：8mm/10mm

定制范围：  
 (W)650-900\*(H)1900-2200

Product shape: Single door  
 Product size: Custome made  
 Product material: 304 stainless steel  
 Product color: Brushed gold/rose gold/gold/gunmetal grey/matt black/silver  
 Glass thickness: 8mm/10mm

Custom scope:  
 (W)650-900\*(H)1900-2200



## F-3073

产品类型：屏风两固一开  
 规格：非标定做  
 产品材质：304不锈钢  
 产品颜色：金拉丝/玫瑰金/钛金/枪灰/亚黑/镜光  
 玻璃厚度：8mm/10mm

定制范围：  
 (W)1200-2000\*(H)1900-2200

Product shape: Two fix with one door  
 Product size: Custome made  
 Product material: 304 stainless steel  
 Product color: Brushed gold/rose gold/gold/gunmetal grey/matt black/silver  
 Glass thickness: 8mm/10mm

Custom scope:  
 (W)1200-2000\*(H)1900-2200



## F-3074

产品类型：钻石型两固一开  
 规格：非标定做  
 产品材质：304不锈钢  
 产品颜色：金拉丝/玫瑰金/钛金/枪灰/亚黑/镜光  
 玻璃厚度：8mm/10mm

定制范围：  
 (L)800-1200\*(L2)800-1200\*(H)1900-2200

Product shape: Diamond, Two fix with one door  
 Product size: Custome made  
 Product material: 304 stainless steel  
 Product color: Brushed gold/rose gold/gold/gunmetal grey/matt black/silver  
 Glass thickness: 8mm/10mm

Custom scope:  
 (L)800-1200\*(L2)800-1200\*(H)1900-2200



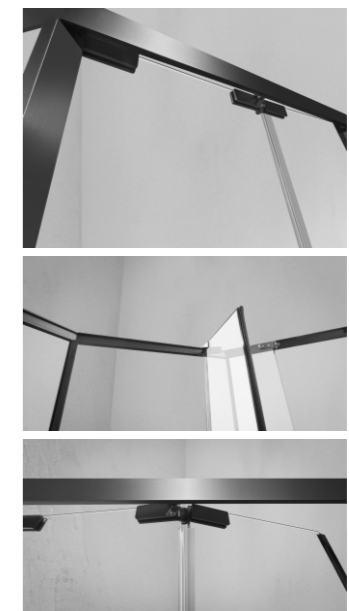
## F-3075

产品类型：钻石型两固一开  
 规格：非标定做  
 产品材质：304不锈钢  
 产品颜色：金拉丝/玫瑰金/钛金/枪灰/亚黑/镜光  
 玻璃厚度：8mm/10mm

定制范围：  
 (L)800-1200\*(L2)800-1200\*(H)1900-2200

Product shape: Diamond, Two fix with one door  
 Product size: Custome made  
 Product material: 304 stainless steel  
 Product color: Brushed gold/rose gold/gold/gunmetal grey/matt black/silver  
 Glass thickness: 8mm/10mm

Custom scope:  
 (L)800-1200\*(L2)800-1200\*(H)1900-2200





## F-3076

产品类型：L型两固一开  
规格：非标定做  
产品材质：304不锈钢  
产品颜色：金拉丝/玫瑰金/钛金/枪灰/亚黑/镜光  
玻璃厚度：8mm/10mm

定制范围：  
(L)800-1200\*(W)1000-1500\*(H)1900-2200

Product shape: L shape,two fix with one door  
Product size: Custome made  
Product material: 304 stainless steel  
Product color: Brushed gold/rose gold/gold/gunmetal grey/matt black/silver  
Glass thickness: 8mm/10mm

Custom scope:  
(L)800-1200\*(W)1000-1500\*(H)1900-2200



## F-3076A

产品类型：L型两固一开  
规格：非标定做  
产品材质：304不锈钢  
产品颜色：金拉丝/玫瑰金/钛金/枪灰/亚黑/镜光  
玻璃厚度：8mm/10mm

定制范围：  
(L)800-1200\*(W)1000-1500\*(H)1900-2200

Product shape: L shape,two fix with one door  
Product size: Custome made  
Product material: 304 stainless steel  
Product color: Brushed gold/rose gold/gold/gunmetal grey/matt black/silver  
Glass thickness: 8mm/10mm

Custom scope:  
(L)800-1200\*(W)1000-1500\*(H)1900-2200



## F-3076-2

产品类型：T型二门侧移  
 规格：非标定做  
 产品材质：304不锈钢  
 产品颜色：金拉丝/玫瑰金/钛金/枪灰/亚黑/镜光  
 玻璃厚度：8mm

定制范围：  
 (L)1600-2400\*(W)800-1400\*(H)1900-2200

Product shape: T shape with two doors  
 Product size: Custome made  
 Product material: 304 stainless steel  
 Product color: Brushed gold/rose gold/gold/gunmetal grey/matt black/silver  
 Glass thickness: 8mm

Custom scope:  
 (L)1600-2400\*(W)800-1400\*(H)1900-2200



## F-3076B

产品类型：侧移  
 规格：非标定做  
 产品材质：304不锈钢  
 产品颜色：玫瑰金/钛金/枪灰/亚黑/镜光  
 玻璃厚度：8mm

定制范围：  
 (L)1600-2400\*(W)800-1400\*(H)1900-2200

Product shape: side two doors  
 Product size: Custome made  
 Product material: 304 stainless steel  
 Product color: rose gold/gold/gunmetal grey/matt black/silver  
 Glass thickness: 8mm

Custom scope:  
 (L)1600-2400\*(W)800-1400\*(H)1900-2200





## F-3077

产品类型：扇型两固两移  
规格：非标定做  
产品材质：304不锈钢  
产品颜色：金拉丝/玫瑰金/钛金/枪灰/亚黑/镜光  
玻璃厚度：8mm/10mm

定制范围：  
(L)800-1200\*(L2)800-1200\*(H)1900-2200

Product shape: Fan shape, two fix with two sliding doors  
Product size: Custome made  
Product material: 304 stainless steel  
Product color: Brushed gold/rose gold/gold/gunmetal grey/matt black/silver  
Glass thickness: 8mm/10mm

Custom scope:  
(L)800-1200\*(L2)800-1200\*(H)1900-2200



## F-3078

产品类型：屏风一固一移（缓冲）  
规格：非标定做  
产品材质：304不锈钢  
产品颜色：金拉丝/玫瑰金/钛金/枪灰/亚黑/镜光  
玻璃厚度：8mm/10mm

定制范围：  
(W)1200-1800\*(H)1900-2200

Product shape: One fix with one door (soft close)  
Product size: Custome made  
Product material: 304 stainless steel  
Product color: Brushed gold/rose gold/gold/gunmetal grey/matt black/silver  
Glass thickness: 8mm/10mm

Custom scope:  
(W)1200-1800\*(H)1900-2200





## F-3079

产品类型：屏风双移（缓冲）  
 规格：非标定做  
 产品材质：304不锈钢  
 产品颜色：金拉丝/玫瑰金/钛金/枪灰/亚黑/镜光  
 玻璃厚度：8mm/10mm

定制范围：  
 (W)1200-1800\*(H)1900-2200

Product shape: Both sliding door (soft close)  
 Product size: Custome made  
 Product material: 304 stainless steel  
 Product color: Brushed gold/rose gold/gold/gunmetal grey/matt black/silver  
 Glass thickness: 8mm/10mm

Custom scope:  
 (W)1200-1800\*(H)1900-2200



## F-3080

产品类型：屏风双移（缓冲）  
 规格：非标定做  
 产品材质：304不锈钢  
 产品颜色：金拉丝/玫瑰金/钛金/枪灰/亚黑/镜光  
 玻璃厚度：8mm/10mm

定制范围：  
 (W)1200-1800\*(H)1900-2200

Product shape: Both sliding door (soft close)  
 Product size: Custome made  
 Product material: 304 stainless steel  
 Product color: Brushed gold/rose gold/gold/gunmetal grey/matt black/silver  
 Glass thickness: 8mm/10mm

Custom scope:  
 (W)1200-1800\*(H)1900-2200





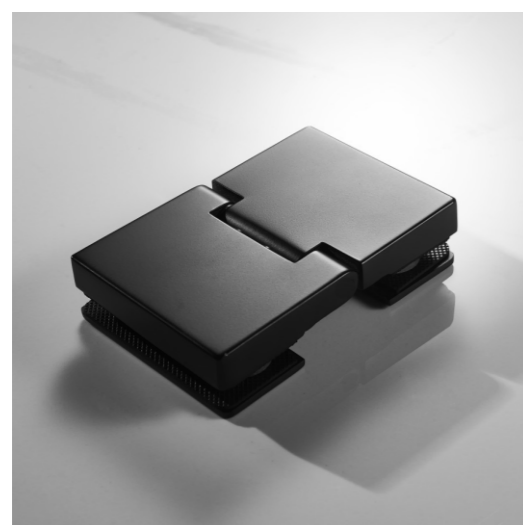
## F-3081

产品类型：屏风两固一开  
 规格：非标定做  
 产品材质：304不锈钢  
 产品颜色：金拉丝/玫瑰金/钛金/枪灰/亚黑/镜光  
 玻璃厚度：8mm/10mm

定制范围：  
 (W)1200-2000\*(H)1900-2200

Product shape: Two fix with one door  
 Product size: Custome made  
 Product material: 304 stainless steel  
 Product color: Brushed gold/rose gold/gold/gunmetal grey/matt black/silver  
 Glass thickness: 8mm/10mm

Custom scope:  
 (W)1200-2000\*(H)1900-2200



## F-3081A

产品类型：T型二门  
 规格：非标定做  
 产品材质：304不锈钢  
 产品颜色：金拉丝/玫瑰金/钛金/枪灰/亚黑/镜光  
 玻璃厚度：8mm/10mm

定制范围：  
 (L)1600-2400\*(W)800-1400\*(H)1900-2200

Product shape: T shape with two doors  
 Product size: Custome made  
 Product material: 304 stainless steel  
 Product color: Brushed gold/rose gold/gold/gunmetal grey/matt black/silver  
 Glass thickness: 8mm/10mm

Custom scope:  
 (L)1600-2400\*(W)800-1400\*(H)1900-2200



## F-3081B

产品类型：钻石型两固一开  
规格：非标定做  
产品材质：304不锈钢  
产品颜色：金拉丝/玫瑰金/钛金/枪灰/亚黑/镜光  
玻璃厚度：8mm/10mm

定制范围：  
(L)800-1200\*(L2)800-1200\*(H)1900-2200

Product shape: Diamond, Two fix with one door  
Product size: Custom made  
Product material: 304 stainless steel  
Product color: Brushed gold/rose gold/gold/gunmetal grey/matt black/silver  
Glass thickness: 8mm/10mm

Custom scope:  
(L)800-1200\*(L2)800-1200\*(H)1900-2200



## F-3081C

产品类型：L型两固一开  
规格：非标定做  
产品材质：304不锈钢  
产品颜色：金拉丝/玫瑰金/钛金/枪灰/亚黑/镜光  
玻璃厚度：8mm/10mm

定制范围：  
(L)800-1200\*(L2)1000-1500\*(H)1900-2200

Product shape: L shape, two fix with one door  
Product size: Custom made  
Product material: 304 stainless steel  
Product color: Brushed gold/rose gold/gold/gunmetal grey/matt black/silver  
Glass thickness: 8mm/10mm

Custom scope:  
(L)800-1200\*(L2)1000-1500\*(H)1900-2200



## F-3082

产品类型：屏风两固一开  
规格：非标定做  
产品材质：304不锈钢  
产品颜色：金拉丝/玫瑰金/钛金/枪灰/亚黑/镜光  
玻璃厚度：8mm/10mm

定制范围：  
(W)1200-2000\*(H)1900-2200

Product shape: Two fix with one door  
Product size: Custome made  
Product material: 304 stainless steel  
Product color: Brushed gold/rose gold/gold/gunmetal grey/matt black/silver  
Glass thickness: 8mm/10mm

Custom scope:  
(W)1200-2000\*(H)1900-2200



## F-3082A

产品类型：钻石型两固一开  
规格：非标定做  
产品材质：304不锈钢  
产品颜色：金拉丝/玫瑰金/钛金/枪灰/亚黑/镜光  
玻璃厚度：8mm/10mm

定制范围：  
(L)800-1200\*(L2)800-1200\*(H)1900-2200

Product shape: Diamond,Two fix with one door  
Product size: Custome made  
Product material: 304 stainless steel  
Product color: Brushed gold/rose gold/gold/gunmetal grey/matt black/silver  
Glass thickness: 8mm/10mm

Custom scope:  
(L)800-1200\*(L2)800-1200\*(H)1900-2200



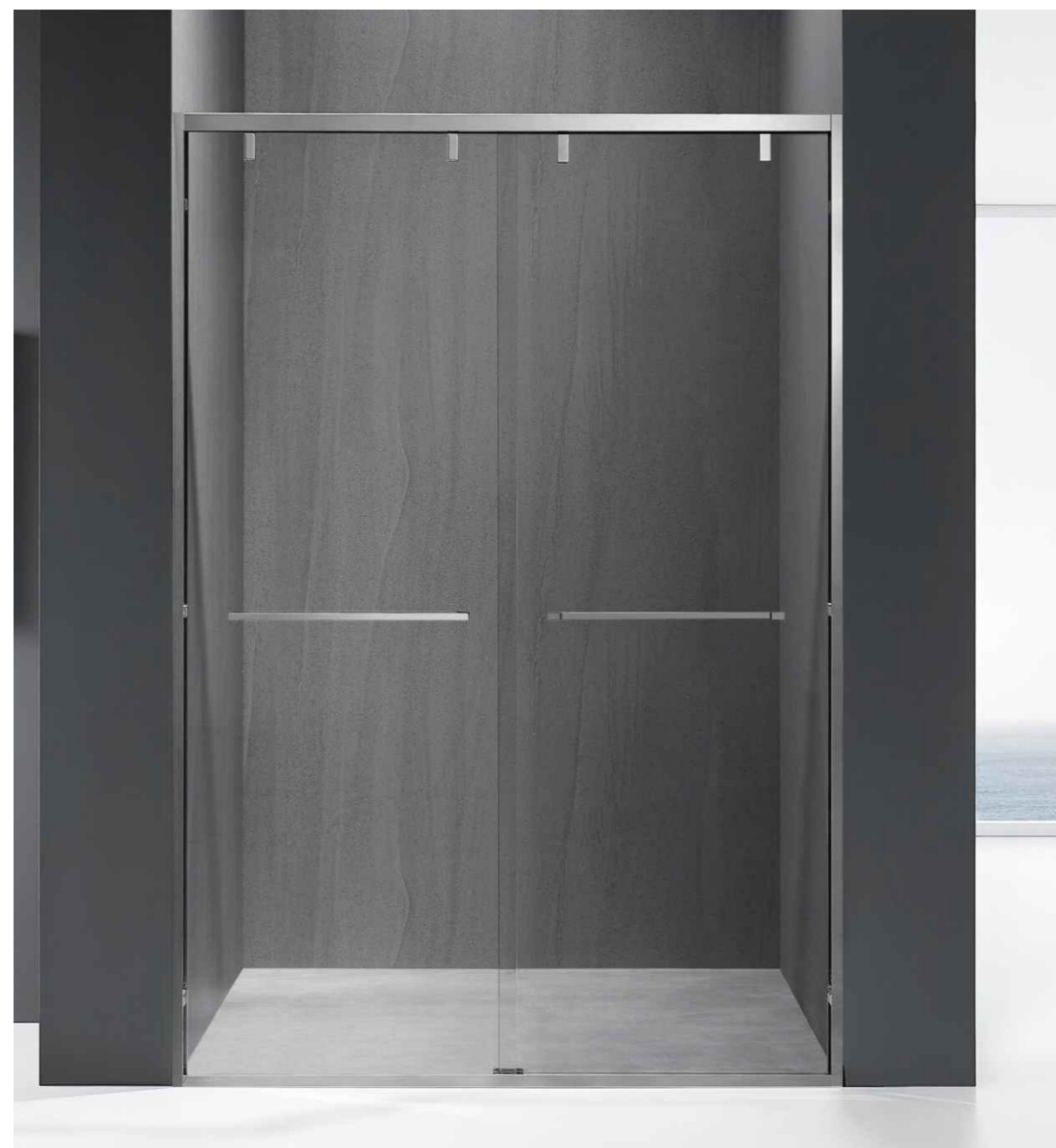
## F-3083

产品类型：T型一门两用  
 规格：非标定做  
 产品材质：304不锈钢  
 产品颜色：金拉丝/玫瑰金/钛金/枪灰/亚黑/镜光  
 玻璃厚度：8mm/10mm

定制范围：  
 (W)1400-2500\*(H)1900-2200

Product shape: One door with two purposes  
 Product size: Custome made  
 Product material: 304 stainless steel  
 Product color: Brushed gold/rose gold/gold/gunmetal grey/matt black/silver  
 Glass thickness: 8mm/10mm

Custom scope:  
 (W)1400-2500\*(H)1900-2200



## F-3084

产品类型：屏风双移  
 规格：非标定做  
 产品材质：304不锈钢  
 产品颜色：金拉丝/玫瑰金/钛金/枪灰/亚黑/镜光  
 玻璃厚度：8mm/10mm

定制范围：  
 (W)1200-1800\*(H)1900-2200

Product shape: Both sliding door  
 Product size: Custome made  
 Product material: 304 stainless steel  
 Product color: Brushed gold/rose gold/gold/gunmetal grey/matt black/silver  
 Glass thickness: 8mm/10mm

Custom scope:  
 (W)1200-1800\*(H)1900-2200



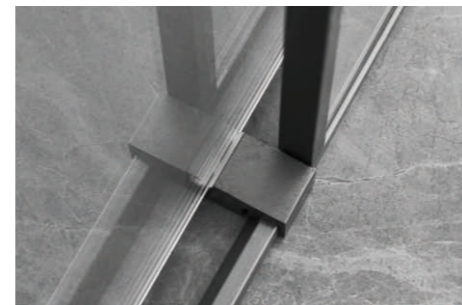
## F-3085

产品类型：屏风一固一移（缓冲）  
 规格：非标定做  
 产品材质：304不锈钢  
 产品颜色：金丝/玫瑰金/钛金/枪灰/亚黑/镜光  
 玻璃厚度：8mm/10mm

定制范围：  
 (W)1200-1800\*(H)1900-2200

Product shape: One fix with one door (soft close)  
 Product size: Custome made  
 Product material: 304 stainless steel  
 Product color: Brushed gold/rose gold/gold/gunmetal grey/matt black/silver  
 Glass thickness: 8mm/10mm

Custom scope:  
 (W)1200-1800\*(H)1900-2200



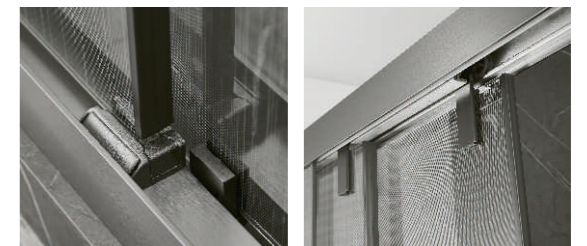
## F-3086

产品类型：屏风一固两移（缓冲）  
 规格：非标定做  
 产品材质：304不锈钢  
 产品颜色：金丝/玫瑰金/钛金/枪灰/亚黑/镜光  
 玻璃厚度：8mm/10mm

定制范围：  
 (W)950-1800\*(H)1900-2200

Product shape: One fix with two sliding doors (soft close)  
 Product size: Custome made  
 Product material: 304 stainless steel  
 Product color: Brushed gold/rose gold/gold/gunmetal grey/matt black/silver  
 Glass thickness: 8mm/10mm

Custom scope:  
 (W)950-1800\*(H)1900-2200





## F-3086A

产品类型：屏风一固两移（缓冲）  
 规格：非标定做  
 产品材质：304不锈钢  
 产品颜色：金拉丝/玫瑰金/钛金/枪灰/亚黑/镜光  
 玻璃厚度：8mm/10mm

定制范围：  
 (W)950-1800\*(H)1900-2200

Product shape: One fix with two sliding doors (soft close)  
 Product size: Custome made  
 Product material: 304 stainless steel  
 Product color: Brushed gold/rose gold/gold/gunmetal grey/matt black/silver  
 Glass thickness: 8mm/10mm

Custom scope:  
 (W)950-1800\*(H)1900-2200



## F-3087

产品类型：屏风双移（缓冲）  
 规格：非标定做  
 产品材质：304不锈钢  
 产品颜色：金拉丝/玫瑰金/钛金/枪灰/亚黑/镜光  
 玻璃厚度：8mm/10mm

定制范围：  
 (W)1200-1800\*(H)1900-2200

Product shape: Both sliding door (soft close)  
 Product size: Custome made  
 Product material: 304 stainless steel  
 Product color: Brushed gold/rose gold/gold/gunmetal grey/matt black/silver  
 Glass thickness: 8mm/10mm

Custom scope:  
 (W)1200-1800\*(H)1900-2200



## F-3088

产品类型：扇型两固两移  
 规格：非标定做  
 产品材质：304不锈钢  
 产品颜色：金拉丝/玫瑰金/钛金/枪灰/亚黑/镜光  
 玻璃厚度：8mm/10mm

定制范围：  
 (L)800-1200\*(L2)800-1200\*(H)1900-2200

Product shape: Fan shape, two fix with two sliding doors  
 Product size: Custome made  
 Product material: 304 stainless steel  
 Product color: Brushed gold/rose gold/gold/gunmetal grey/matt black/silver  
 Glass thickness: 8mm/10mm

Custom scope:  
 (L)800-1200\*(L2)800-1200\*(H)1900-2200



## F-3089

产品类型：屏风双移（缓冲）  
 规格：非标定做  
 产品材质：304不锈钢  
 产品颜色：金拉丝/玫瑰金/钛金/枪灰/亚黑/镜光  
 玻璃厚度：8mm/10mm

定制范围：  
 (W)1200-1800\*(H)1900-2200

Product shape: Both sliding door (soft close)  
 Product size: Custome made  
 Product material: 304 stainless steel  
 Product color: Brushed gold/rose gold/gold/gunmetal grey/matt black/silver  
 Glass thickness: 8mm/10mm

Custom scope:  
 (W)1200-1800\*(H)1900-2200



## F-3090

产品类型：屏风双移（缓冲）  
 规格：非标定做  
 产品材质：304不锈钢  
 产品颜色：金拉丝/玫瑰金/钛金/枪灰/亚黑/镜光  
 玻璃厚度：8mm/10mm

定制范围：  
 (W)1200-1800\*(H)1900-2200

Product shape: Both sliding door (soft close)  
 Product size: Custome made  
 Product material: 304 stainless steel  
 Product color: Brushed gold/rose gold/gold/gunmetal grey/matt black/silver  
 Glass thickness: 8mm/10mm

Custom scope:  
 (W)1200-1800\*(H)1900-2200



## F-3091

产品类型：屏风双移  
 规格：非标定做  
 产品材质：304不锈钢  
 产品颜色：金拉丝/玫瑰金/钛金/枪灰/亚黑/镜光  
 玻璃厚度：8mm/10mm

定制范围：  
 (W)1200-1800\*(H)1900-2200

Product shape: Both sliding door  
 Product size: Custome made  
 Product material: 304 stainless steel  
 Product color: Brushed gold/rose gold/gold/gunmetal grey/matt black/silver  
 Glass thickness: 8mm/10mm

Custom scope:  
 (W)1200-1800\*(H)1900-2200



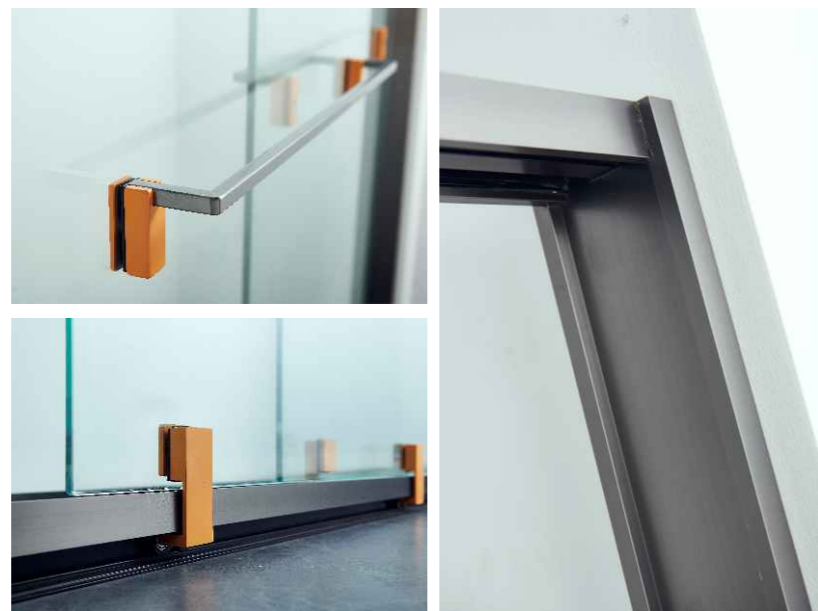
## F-3092

产品类型：屏风双移（缓冲）  
 规格：非标定做  
 产品材质：304不锈钢  
 产品颜色：金拉丝/玫瑰金/钛金/枪灰/亚黑/镜光  
 玻璃厚度：8mm/10mm

定制范围：  
 (W)1200-1800\*(H)1900-2200

Product shape: Both sliding door (soft close)  
 Product size: Custome made  
 Product material: 304 stainless steel  
 Product color: Brushed gold/rose gold/gold/  
 gunmetal grey/matt black/silver  
 Glass thickness: 8mm/10mm

Custom scope:  
 (W)1200-1800\*(H)1900-2200



## F-3093

产品类型：钻石型两固一开  
 规格：非标定做  
 产品材质：304不锈钢  
 产品颜色：金拉丝/玫瑰金/钛金/枪灰/亚黑/镜光  
 玻璃厚度：8mm/10mm

定制范围：  
 (L)800-1200\*(L2)800-1200\*(H)1900-2200

Product shape: Diamond, Two fix with one door  
 Product size: Custome made  
 Product material: 304 stainless steel  
 Product color: Brushed gold/rose gold/gold/gunmetal grey/matt black/silver  
 Glass thickness: 8mm/10mm

Custom scope:  
 (L)800-1200\*(L2)800-1200\*(H)1900-2200



## F-3093B

产品类型：屏风两固一开  
规格：非标定做  
产品材质：304不锈钢  
产品颜色：金拉丝/玫瑰金/钛金/枪灰/亚黑/镜光  
玻璃厚度：8mm/10mm

定制范围：  
(W)1200-2000\*(H)1900-2200

Product shape: Two fix with one door  
Product size: Custome made  
Product material: 304 stainless steel  
Product color: Brushed gold/rose gold/gold/gunmetal grey/matt black/silver  
Glass thickness: 8mm/10mm

Custom scope:  
(W)120-2000\*(H)1900-2200

## F-3093A

产品类型：T型二门  
规格：非标定做  
产品材质：304不锈钢  
产品颜色：金拉丝/玫瑰金/钛金/枪灰/亚黑/镜光  
玻璃厚度：8mm/10mm

定制范围：  
(L)1600-2400\*(W)800-1400\*(H)1900-2200

Product shape: T shape with doors  
Product size: Custome made  
Product material: 304 stainless steel  
Product color: Brushed gold/rose gold/gold/gunmetal grey/matt black/silver  
Glass thickness: 8mm/10mm

Custom scope:  
(L)1600-2400\*(W)800-1400\*(H)1900-2200



## F-3093C

产品类型：L型两固一开  
规格：非标定做  
产品材质：304不锈钢  
产品颜色：金拉丝/玫瑰金/钛金/枪灰/亚黑/镜光  
玻璃厚度：8mm/10mm

定制范围：  
(L)800-1200\*(L2)1000-1500\*(H)1900-2200

Product shape: L shape,two fix with one door  
Product size: Custome made  
Product material: 304 stainless steel  
Product color: Brushed gold/rose gold/gold/gunmetal grey/matt black/silver  
Glass thickness: 8mm/10mm

Custom scope:  
(L)800-1200\*(L2)1000-1500\*(H)1900-2200





## F-3094

产品类型：钻石型两固一开  
 规格：非标定做  
 产品材质：304不锈钢  
 产品颜色：金拉丝/玫瑰金/钛金/枪灰/亚黑/镜光  
 玻璃厚度：8mm/10mm

定制范围：  
 (L)800-1200\*(L2)800-1200\*(H)1900-2200

Product shape: Diamond, Two fix with one door  
 Product size: Custome made  
 Product material: 304 stainless steel  
 Product color: Brushed gold/rose gold/gold/  
 gunmetal grey/matt black/silver  
 Glass thickness: 8mm/10mm

Custom scope:  
 (L)800-1200\*(L2)800-1200\*(H)1900-2200

## F-3094B

产品类型：屏风一固一开  
 规格：非标定做  
 产品材质：304不锈钢  
 产品颜色：金拉丝/玫瑰金/钛金/枪灰/亚黑/镜光  
 玻璃厚度：8mm/10mm

定制范围：  
 (W)1200-1800\*(H)1900-2200

Product shape: One fix with door  
 Product size: Custome made  
 Product material: 304 stainless steel  
 Product color: Brushed gold/rose gold/gold/  
 gunmetal grey/matt black/silver  
 Glass thickness: 8mm/10mm

Custom scope:  
 (W)1200-1800\*(H)1900-2200



## F-3094A

产品类型：T型二门  
 规格：非标定做  
 产品材质：304不锈钢  
 产品颜色：金拉丝/玫瑰金/钛金/枪灰/亚黑/镜光  
 玻璃厚度：8mm/10mm

定制范围：  
 (L)1600-2400\*(W)800-1400\*(H)1900-2200

Product shape: T shape with two doors  
 Product size: Custome made  
 Product material: 304 stainless steel  
 Product color: Brushed gold/rose gold/gold/  
 gunmetal grey/matt black/silver  
 Glass thickness: 8mm/10mm

Custom scope:  
 (L)1600-2400\*(W)800-1400\*(H)1900-2200

## F-3094C

产品类型：单开门  
 规格：非标定做  
 产品材质：304不锈钢  
 产品颜色：金拉丝/玫瑰金/钛金/枪灰/亚黑/镜光  
 玻璃厚度：8mm/10mm

定制范围：  
 (W)650-900\*(H)1900-2200

Product shape: Single door  
 Product size: Custome made  
 Product material: 304 stainless steel  
 Product color: Brushed gold/rose gold/gold/  
 gunmetal grey/matt black/silver  
 Glass thickness: 8mm/10mm

Custom scope:  
 (W)650-900\*(H)1900-2200



## F-3095

产品类型：全景门两固两移  
规格：非标定做  
产品材质：304不锈钢  
产品颜色：金拉丝/玫瑰金/钛金/枪灰/亚黑/镜光  
玻璃厚度：8mm/10mm

定制范围：  
(W)1500-3000\*(H)1900-2500

Product shape: Two fix with two sliding doors  
Product size: Custome made  
Product material: 304 stainless steel  
Product color: Brushed gold/rose gold/gold/gunmetal grey/matt black/silver  
Glass thickness: 8mm/10mm

Custom scope:  
(W)1500-3000\*(H)1900-2500





## F-3096

产品类型：屏风双移  
规格：非标定做

产品材质：304不锈钢  
产品颜色：金拉丝/玫瑰金/钛金/枪灰/亚黑/镜光  
玻璃厚度：8mm/10mm

定制范围：  
(W)1200-1800\*(H)1900-2200

Product shape: Both sliding door  
Product size: Custome made  
Product material: 304 stainless steel  
Product color: Brushed gold/rose gold/gold/gunmetal grey/matt black/silver  
Glass thickness: 8mm/10mm

Custom scope:  
(W)1200-1800\*(H)1900-2200



## F-3097

产品类型：屏风一固两移  
规格：非标定做

产品材质：304不锈钢  
产品颜色：金拉丝/玫瑰金/钛金/枪灰/亚黑/镜光  
玻璃厚度：8mm/10mm

定制范围：  
(W)950-1800\*(H)1900-2200

Product shape: One fix with two sliding doors  
Product size: Custome made  
Product material: 304 stainless steel  
Product color: Brushed gold/rose gold/gold/gunmetal grey/matt black/silver  
Glass thickness: 8mm/10mm

Custom scope:  
(W)950-1800\*(H)1900-2200



## F-3098

产品类型：屏风一固一移（缓冲）  
 规格：非标定做  
 产品材质：304不锈钢  
 产品颜色：金拉丝/玫瑰金/钛金/枪灰/亚黑/镜光  
 玻璃厚度：8mm

定制范围：  
 (W)1200-1800\*(H)1900-2200

Product shape: One fix with one door (soft close)  
 Product size: Custome made  
 Product material: 304 stainless steel  
 Product color: Brushed gold/rose gold/gold/gunmetal grey/matt black/silver  
 Glass thickness: 8mm

Custom scope:  
 (W)1200-1800\*(H)1900-2200



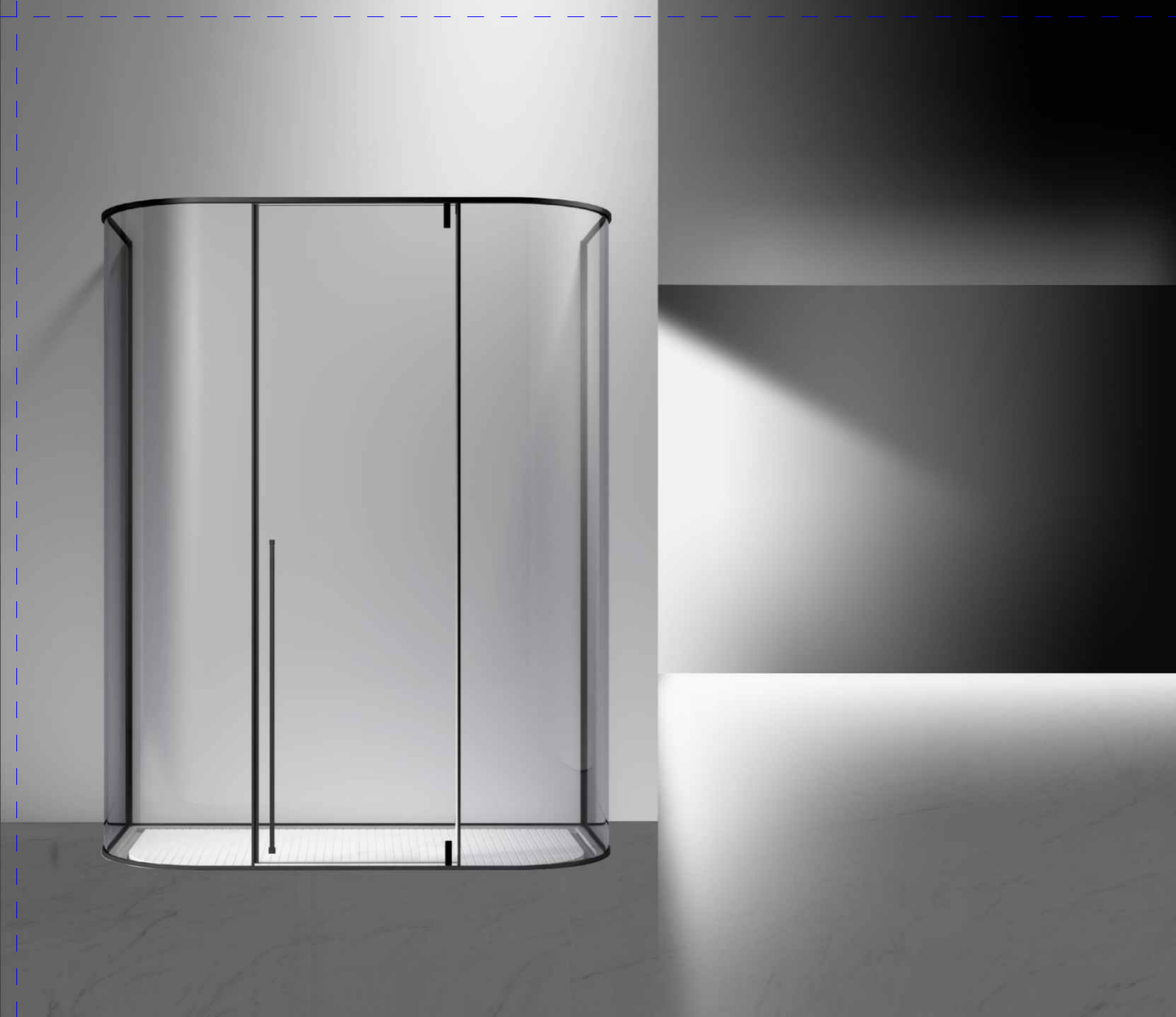
## F-3099

产品类型：屏风双移  
 规格：非标定做  
 产品材质：304不锈钢  
 产品颜色：金拉丝/玫瑰金/钛金/枪灰/亚黑/镜光  
 玻璃厚度：8mm/10mm

定制范围：  
 (W)1200-1800\*(H)1900-2200

Product shape: Both sliding door  
 Product size: Custome made  
 Product material: 304 stainless steel  
 Product color: Brushed gold/rose gold/gold/gunmetal grey/matt black/silver  
 Glass thickness: 8mm/10mm

Custom scope:  
 (W)1200-1800\*(H)1900-2200



## F-3100

产品类型：双U单开门  
规格：非标定做  
产品材质：304不锈钢  
产品颜色：金拉丝/玫瑰金/钛金/枪灰/亚黑/镜光  
玻璃厚度：8mm/10mm

定制范围：  
(L)1200-1800\*(L2)800-1200\*(H)1900-2200

Product shape: U shape swing door  
Product size: Custome made  
Product material: 304 stainless steel  
Product color: Brushed gold/rose gold/gold/gunmetal grey/matt black/silver  
Glass thickness: 8mm/10mm

Custom scope:  
(L)1200-1800\*(L2)800-1200\*(H)1900-2200



## F-3101

产品类型：钻石型两固一开(内外开)  
规格：非标定做  
产品材质：304不锈钢  
产品颜色：金拉丝/玫瑰金/钛金/枪灰/亚黑/镜光  
玻璃厚度：8mm/10mm

定制范围：  
(L)800-1200\*(L2)800-1200\*(H)1900-2200

Product shape: Diamond, Two fix with one swing door(opening both side)  
Product size: Custome made  
Product material: 304 stainless steel  
Product color: Brushed gold/rose gold/gold/gunmetal grey/matt black/silver  
Glass thickness: 8mm/10mm

Custom scope:  
(L)800-1200\*(L2)800-1200\*(H)1900-2200



## F-3101A

产品类型：屏风两固一开(内外开)  
规格：非标定做  
产品材质：304不锈钢  
产品颜色：金拉丝/玫瑰金/钛金/枪灰/亚黑/镜光  
玻璃厚度：8mm/10mm

定制范围：  
(L)1200-2000\*(H)1900-2200

Product shape: Two fix with one swing door(opening both side)  
Product size: Custome made  
Product material: 304 stainless steel  
Product color: Brushed gold/rose gold/gold/gunmetal grey/matt black/silver  
Glass thickness: 8mm/10mm

Custom scope:  
(L)1200-2000\*(H)1900-2200



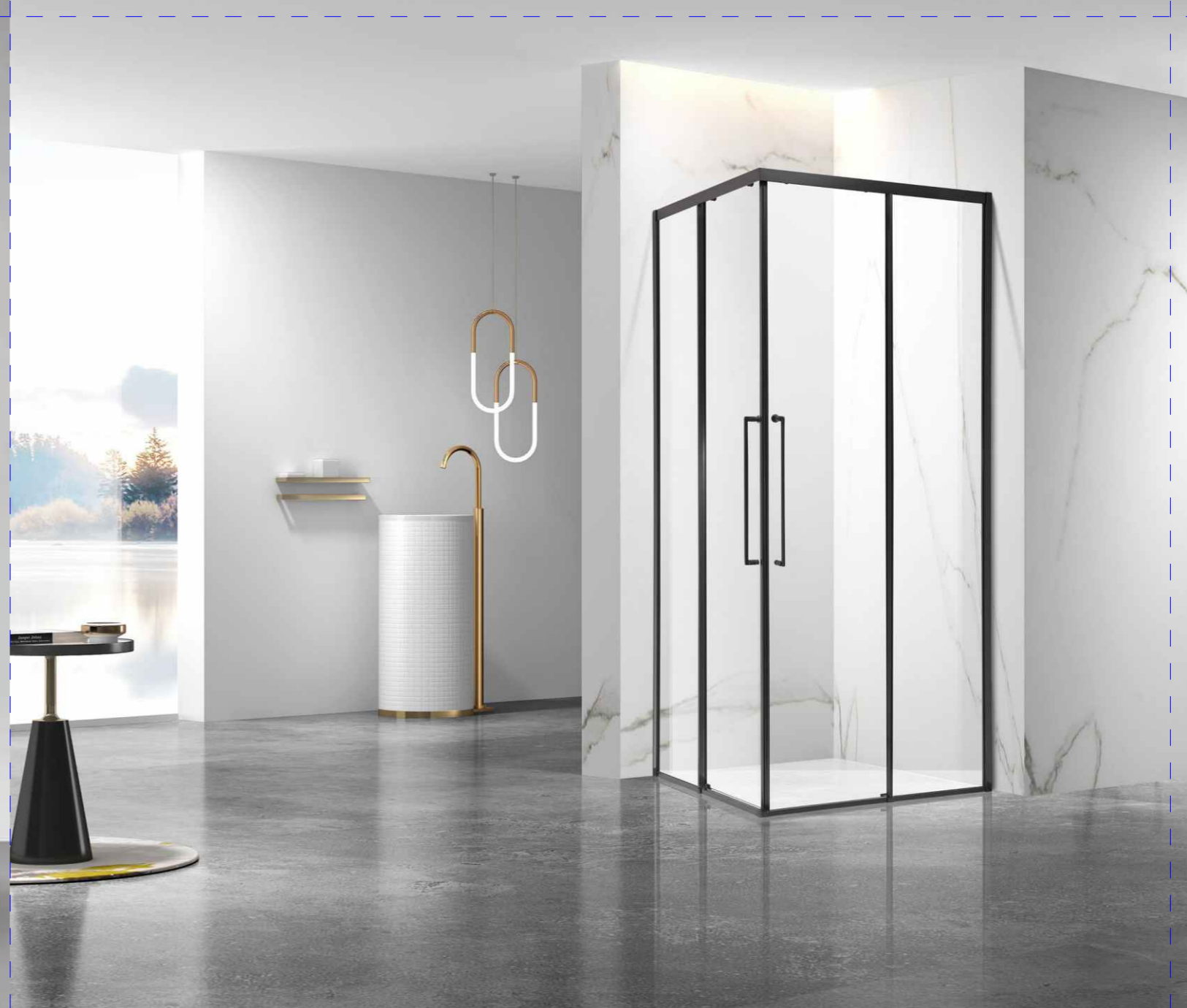
## F-3101B

产品类型：单开门(内外开)  
规格：非标定做  
产品材质：304不锈钢  
产品颜色：金拉丝/玫瑰金/钛金/枪灰/亚黑/镜光  
玻璃厚度：8mm/10mm

定制范围：  
(L)650-900\*(H)1900-2200

Product shape: Single door(opening both side)  
Product size: Custome made  
Product material: 304 stainless steel  
Product color: Brushed gold/rose gold/gold/gunmetal grey/matt black/silver  
Glass thickness: 8mm/10mm

Custom scope:  
(L)650-900\*(H)1900-2200



## F-3102

产品类型：折叠门  
规格：非标定做  
产品材质：304不锈钢  
产品颜色：金拉丝/玫瑰金/钛金/枪灰/亚黑/镜光  
玻璃厚度：8mm/10mm

定制范围：  
(L)650-1200\*(H)1900-2200

Product shape: Folding door  
Product size: Custome made  
Product material: 304 stainless steel  
Product color: Brushed gold/rose gold/gold/gunmetal grey/matt black/silver  
Glass thickness: 8mm/10mm

Custom scope:  
(L)650-1200\*(H)1900-2200



## F-3103

产品类型：方形两固两移  
规格：非标定做  
产品材质：304不锈钢  
产品颜色：金拉丝/玫瑰金/钛金/枪灰/亚黑/镜光  
玻璃厚度：8mm/10mm

定制范围：  
(L)650-1200\*(H)1900-2200

Product shape: Square shape,two fix with two sliding doors  
Product size: Custome made  
Product material: 304 stainless steel  
Product color: Brushed gold/rose gold/gold/gunmetal grey/matt black/silver  
Glass thickness: 8mm/10mm

Custom scope:  
(L)650-1200\*(H)1900-2200



## F-3104

产品类型：屏风双移（带缓冲）  
 规格：非标定做  
 产品材质：304不锈钢  
 产品颜色：金拉丝/玫瑰金/钛金/枪灰/亚黑/镜光  
 玻璃厚度：8mm/10mm

定制范围：  
 (L)1200-1800\*(H)1900-2200

Product shape: Both sliding door(soft close)  
 Product size: Custome made  
 Product material: 304 stainless steel  
 Product color: Brushed gold/rose gold/gold/gunmetal grey/matt black/silver  
 Glass thickness: 8mm/10mm

Custom scope:  
 (L)1200-1800\*(H)1900-2200



## F-3105

产品类型：T型两门  
 规格：非标定做  
 产品材质：304不锈钢  
 产品颜色：金拉丝/玫瑰金/钛金/枪灰/亚黑/镜光  
 玻璃厚度：8mm/10mm

定制范围：  
 (L)1600-2400\*(W)800-1400\*(H)1900-2200

Product shape: T shape with two doors  
 Product size: Custome made  
 Product material: 304 stainless steel  
 Product color: Brushed gold/rose gold/gold/gunmetal grey/matt black/silver  
 Glass thickness: 8mm/10mm

Custom scope:  
 (L)1600-2400\*(W)800-1400\*(H)1900-2200



270° 旋转角度, 自由空间, 开合舒畅



## F-3106

产品类型: T型一门两用  
规格: 非标定做  
产品材质: 304不锈钢  
产品颜色: 金拉丝/玫瑰金/钛金/枪灰/亚黑/镜光  
玻璃厚度: 8mm/10mm

定制范围:  
(L)1600-2400\*(W)800-1400\*(H)1900-2200

Product shape: T shape with one door  
Product size: Custome made  
Product material: 304 stainless steel  
Product color: Brushed gold/rose gold/gold/gunmetal grey/matt black/silver  
Glass thickness: 8mm/10mm

Custom scope:  
(L)1600-2400\*(W)800-1400\*(H)1900-2200



## F-3107

产品类型: 屏风一固一开  
规格: 非标定做  
产品材质: 304不锈钢  
产品颜色: 金拉丝/玫瑰金/钛金/枪灰/亚黑/镜光  
玻璃厚度: 8mm/10mm

定制范围:  
(L)1200-2000\*(H)1900-2200

Product shape: one fix one swing door  
Product size: Custome made  
Product material: 304 stainless steel  
Product color: Brushed gold/rose gold/gold/gunmetal grey/matt black/silver  
Glass thickness: 8mm/10mm

Custom scope:  
(L)1200-2000\*(H)1900-2200





## F-3108

产品类型：L型两固一开  
规格：非标定做  
产品材质：304不锈钢  
产品颜色：金拉丝/玫瑰金/钛金/枪灰/亚黑/镜光  
玻璃厚度：8mm/10mm

定制范围：  
(L)800-1200\*(W)1000-1500\*(H)1900-2200

Product shape: L shape, two fix with one swing door  
Product size: Custom made  
Product material: 304 stainless steel  
Product color: Brushed gold/rose gold/gold/gunmetal grey/matt black/silver  
Glass thickness: 8mm/10mm

Custom scope:  
(L)800-1200\*(W)1000-1500\*(H)1900-2200



## F-3109

产品类型：钻石型两固一开  
 规格：非标定做  
 产品材质：304不锈钢  
 产品颜色：金拉丝/玫瑰金/钛金/枪灰/亚黑/镜光  
 玻璃厚度：8mm/10mm

定制范围：  
 (L)800-1200\*(L2)800-1200\*(H)1900-2200

Product shape: Diamond, Two fix with one door  
 Product size: Custome made  
 Product material: 304 stainless steel  
 Product color: Brushed gold/rose gold/gold/gunmetal grey/matt black/silver  
 Glass thickness: 8mm/10mm

Custom scope:  
 (L)800-1200\*(L2)800-1200\*(H)1900-2200



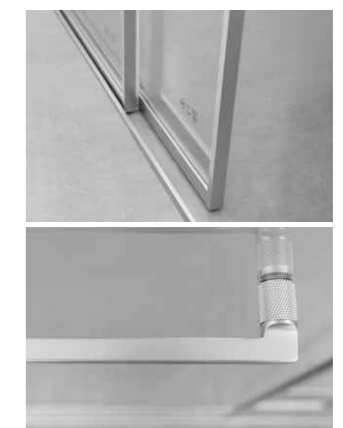
## F-3110

产品类型：屏风双移（带缓冲）  
 规格：非标定做  
 产品材质：304不锈钢  
 产品颜色：金拉丝/玫瑰金/钛金/枪灰/亚黑/镜光  
 玻璃厚度：8mm/10mm

定制范围：  
 (L)1200-1800\*\*(H)1900-2200

Product shape: Both sliding door  
 Product size: Custome made  
 Product material: 304 stainless steel  
 Product color: Brushed gold/rose gold/gold/gunmetal grey/matt black/silver  
 Glass thickness: 8mm/10mm

Custom scope:  
 (L)1200-1800\*\*(H)1900-2200





## F-3111

产品类型：屏风一固一移（带缓冲）  
 规格：非标定做  
 产品材质：304不锈钢  
 产品颜色：金拉丝/玫瑰金/钛金/枪灰/亚黑/镜光  
 玻璃厚度：8mm/10mm

定制范围：  
 (L)1200-1800\*(H)1900-2200

Product shape: One fix one sliding door  
 Product size: Custome made  
 Product material: 304 stainless steel  
 Product color: Brushed gold/rose gold/gold/gunmetal grey/matt black/silver  
 Glass thickness: 8mm/10mm

Custom scope:  
 (L)1200-1800\*(H)1900-2200

## F-3112

产品类型：T型一门两用  
 规格：非标定做  
 产品材质：304不锈钢  
 产品颜色：金拉丝/玫瑰金/钛金/枪灰/亚黑/镜光  
 玻璃厚度：8mm/10mm

定制范围：  
 (L)1600-2400\*(W)800-1400\*(H)1900-2200

Product shape: T shape with one door  
 Product size: Custome made  
 Product material: 304 stainless steel  
 Product color: Brushed gold/rose gold/gold/gunmetal grey/matt black/silver  
 Glass thickness: 8mm/10mm

Custom scope:  
 (L)1600-2400\*(W)800-1400\*(H)1900-2200





## F-4001

产品类型：单固门  
规格：非标定做  
产品材质：304不锈钢  
产品颜色：金拉丝/玫瑰金/钛金/枪灰/亚黑/镜光  
玻璃厚度：8mm/10mm

定制范围：  
(W)600-1000\*(H)1900-2200

Product shape: One fix  
Product size: Custome made  
Product material: 304 stainless steel  
Product color: Brushed gold/rose gold/gold/gunmetal grey/matt black/silver  
Glass thickness: 8mm/10mm

Custom scope:  
(W)600-1000\*(H)1900-2200



## F-4002

产品类型：单固门  
规格：非标定做  
产品材质：304不锈钢  
产品颜色：金拉丝/玫瑰金/钛金/枪灰/亚黑/镜光  
玻璃厚度：8mm/10mm

定制范围：  
(W)600-1000\*(H)1900-2200

Product shape: One fix  
Product size: Custome made  
Product material: 304 stainless steel  
Product color: Brushed gold/rose gold/gold/gunmetal grey/matt black/silver  
Glass thickness: 8mm/10mm

Custom scope:  
(W)600-1000\*(H)1900-2200



## F-4003

产品类型：单门  
规格：非标定做  
产品材质：304不锈钢  
产品颜色：金拉丝/玫瑰金/钛金/枪灰/亚黑/镜光  
玻璃厚度：8mm/10mm

定制范围：  
(L)600-1000\*(H)1900-2200

Product shape: One single door  
Product size: Custome made  
Product material: 304 stainless steel  
Product color: Brushed gold/rose gold/gold/gunmetal grey/matt black/silver  
Glass thickness: 8mm/10mm

Custom scope:  
(L)600-1000\*(H)1900-2200



## F-4004

产品类型：单门  
规格：非标定做  
产品材质：304不锈钢  
产品颜色：金拉丝/玫瑰金/钛金/枪灰/亚黑/镜光  
玻璃厚度：8mm/10mm

定制范围：  
(L)600-1000\*(H)1900-2200

Product shape: One single door  
Product size: Custome made  
Product material: 304 stainless steel  
Product color: Brushed gold/rose gold/gold/gunmetal grey/matt black/silver  
Glass thickness: 8mm/10mm

Custom scope:  
(L)600-1000\*(H)1900-2200



### F-2004

Glass/玻璃: 8mm/10mm

Material/材质: SS304

Color/颜色: black+gold/black+rose gold

哑黑+金/哑黑+玫瑰金



### F-2006

Glass/玻璃: 8mm/10mm

Material/材质: SS304

Color/颜色: black+rose gold

哑黑+玫瑰金





**F-2007**

Size: 900x900x2000mm  
 Glass/玻璃: 8mm/10mm  
 Material/材质: SS304



**F-2007A**

Size: 900x1200x2000mm  
 Glass/玻璃: 8mm/10mm  
 Material/材质: SS304



**F-2007B**

Glass/玻璃: 8mm/10mm  
 Material/材质: SS304



### F-2010

Size: 900x900x2000mm  
 Glass/玻璃: 8mm/10mm  
 Material/材质: SS304  
 Color/颜色: brozen/red brozen  
 青古铜/红古铜



### F-2011

Size: 900x900x2000mm  
 Glass/玻璃: 8mm/10mm  
 Material/材质: SS304  
 Color/颜色: black+gold/white+gold  
 哑黑+金/白+金



品名: 180度合页  
 材质: 铜, 304不锈钢



品名: 90度合页  
 材质: 铜, 304不锈钢



品名: 90度固定夹  
 材质: 铜, 304不锈钢



品名: 90度固定夹  
 材质: 铜, 04不锈钢



品名: 吊夹  
 材质: 铜, 304不锈钢



品名: 180度合页  
 材质: SUS304不锈钢



品名: 90度固定夹  
 材质: SUS304不锈钢



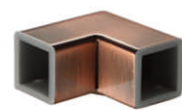
品名: 吊夹  
 材质: SUS304不锈钢



品名: 拉手  
 材质: SUS304不锈钢



品名: 135度连接件  
 材质: 304不锈钢



品名: 90度连接件  
 材质: 304不锈钢



品名: 墙套  
 材质: 304不锈钢



品名: 拉手  
 材质: 304不锈钢



品名: 挡水条  
 材质: 铝



品名: 25x25方管  
 材质: 304不锈钢



品名: 万向连接件  
 材质: SUS304不锈钢



品名: 墙套  
 材质: SUS304不锈钢



品名: 挡水条  
 材质: SUS304不锈钢



品名: 30x30方管  
 材质: SUS304不锈钢



### F-2012

Size: 900x900x2000mm  
 Glass/玻璃: 8mm/10mm  
 Material/材质: SS304  
 Color/颜色: black/mirror polished  
 哑黑/镜光



品名: 180度合页  
 材质: SUS304不锈钢



品名: 180度内开合页  
 材质: SUS304不锈钢



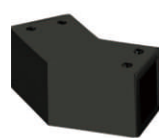
品名: 90度固定夹  
 材质: SUS304不锈钢



品名: 吊夹  
 材质: SUS304不锈钢



品名: 拉手  
 材质: SUS304不锈钢



品名: 135度连接件  
 材质: SUS304不锈钢



品名: 90度连接件  
 材质: SUS304不锈钢



品名: 墙套  
 材质: SUS304不锈钢



品名: 挡水条  
 材质: SUS304不锈钢



品名: 25x25方管  
 材质: SUS304不锈钢

### F-2013

Size: 900x900x2000mm  
 Glass/玻璃: 8mm/10mm  
 Material/材质: SS304  
 Color/颜色: black/gold/rose gold/mirror polished  
 哑黑/钛金/玫瑰金/镜光



品名: 自由合页  
 材质: SUS304不锈钢



品名: 90度固定夹  
 材质: SUS304不锈钢



品名: 吊夹 25X25  
 材质: SUS304不锈钢



品名: 对拉拉手  
 材质: SUS304不锈钢



品名: 135度连接件 25X25  
 材质: SUS304不锈钢



品名: 90度连接件 25X25  
 材质: SUS304不锈钢



品名: 墙套 25X25  
 材质: SUS304不锈钢



品名: 挡水条  
 材质: SUS304不锈钢



品名: 25x25方管  
 材质: SUS304不锈钢



**F-2014A**

Glass/玻璃: 8mm/10mm  
 Material/材质: SS304  
 Color/颜色: black/gold/rose gold/mirror polished  
 哑黑/钛金/玫瑰金/镜光



**F-2014**

Size: 900x900x2000mm  
 Glass/玻璃: 8mm/10mm  
 Material/材质: SS304  
 Color/颜色: black/gold/rose gold/mirror polished  
 哑黑/钛金/玫瑰金/镜光



**F-2014B**

Glass/玻璃: 8mm/10mm  
 Material/材质: SS304  
 Color/颜色: black/gold/rose gold/mirror polished  
 哑黑/钛金/玫瑰金/镜光



**F-2014C**

Size: 900x1200x2000mm  
 Glass/玻璃: 8mm/10mm  
 Material/材质: SS304  
 Color/颜色: black/gold/rose gold/mirror polished  
 哑黑/钛金/玫瑰金/镜光



品名: 180度合页  
 材质: SUS304不锈钢



品名: 135度合页  
 材质: SUS304不锈钢



品名: 90度固定夹  
 材质: SUS304不锈钢



品名: 吊夹25x25  
 材质: SUS304不锈钢



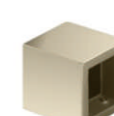
品名: 单抽拉手  
 孔距: 400



品名: 135度连接件 25x25  
 材质: SUS304不锈钢



品名: 90度连接件 25x25  
 材质: SUS304不锈钢



品名: 墙套 25x25  
 材质: SUS304不锈钢



25x25 方管



品名: 挡水条  
 材质: SUS304不锈钢



品名: 90度 单边合页  
 材质: SUS304不锈钢



品名: 90度 T形固定夹  
 材质: SUS304不锈钢



品名: 90度 双边固定夹  
 材质: SUS304不锈钢



品名: 万向连接件 25x25  
 材质: SUS304不锈钢



品名: 吊夹 25x25  
 材质: SUS304不锈钢



## CLASSIC STYLE

### F-2033

Glass/玻璃: 8mm/10mm  
 Material/材质: SS304  
 Color/颜色: black/gold/rose gold/mirror polished  
 哑黑/钛金/玫瑰金/镜光



### F-2036

Glass/玻璃: 8mm/10mm  
 Material/材质: SS304  
 Color/颜色: mirror polished /black 镜光/钛黑





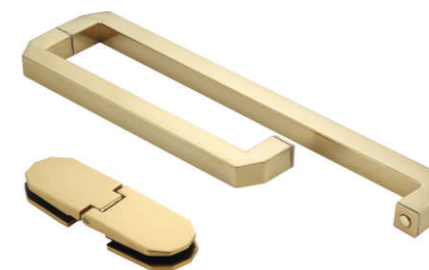
**F-2037**

Size: 900x900x2000mm  
 Glass/玻璃: 8mm/10mm  
 Material/材质: SS304  
 Color/颜色: mirror polished /black 镜光/钛黑



**F-2040**

Size: 900x900x2000mm  
 Glass/玻璃: 8mm/10mm  
 Material/材质: SS304  
 Color/颜色: black/gold/mirror polished  
 哑黑/钛金/镜光





## F-2042

Size: 900x900x2000mm

Glass/玻璃: 8mm/10mm

Material/材质: SS304

Color/颜色: mirror polished/gold/black/rose gold  
镜光/钛金/哑黑/玫瑰金

Time is a piece of mirror and shows you clearly the changes in your face caused by time. If you have a little more confidence and smile day by day, you will have your heart being full of the most natural spring, and then you will have eternal elegance although the time is unmerciful.

时间是一面镜子，即使岁月无痕，也将苍老的面容照亮。如果每一天多一点自信，多一些微笑，心灵浸润最自然的源泉中，即使时间无情，优雅不失。



## F-2043

Size: 800x1200x2000mm

Glass/玻璃: 8mm/10mm

Material/材质: SS304

Color/颜色: black/gold/rose gold/mirror polished  
哑黑/钛金/玫瑰金/镜光





### F-2044

Size: 900x900x2000mm  
 Glass/玻璃: 8mm/10mm  
 Material/材质: SS304  
 Color/颜色: mirror polished/gold/black/rose gold  
 镜光/钛金/哑黑/玫瑰金

Exploration of the art, us to improve ourselves continuously. The distinguished experience to modern bathroom space, from fun atmosphere of space continuously in great experience.

对艺术的探索，让我们不断升华自我。现代卫浴空间的尊贵体验，在恣情体验中不断烘焙空间情趣氛围。



### F-3011

Glass/玻璃: 6mm/8mm  
 Material/材质: SS304  
 Color/颜色: mirror polished/gold/black/rose gold  
 镜光/钛金/哑黑/玫瑰金





### F-3011A

Glass/玻璃: 6mm/8mm

Material/材质: SS304

Color/颜色: mirror polished/gold/black/rose gold

镜光/钛金/哑黑/玫瑰金



### F-3011B

Glass/玻璃: 6mm/8mm

Material/材质: SS304

Color/颜色: mirror polished/gold/black/rose gold

镜光/钛金/哑黑/玫瑰金

Moved by the living existence,penetrate the quiet morning,and aftertaste the sweet and meticulous moments.  
More a reverie and emotion in space can be associated with the eternal.

感动生活所在，穿透晨间的静谧，回味细致甜蜜。空间要多一份遐想与感动，才能与永恒相伴。



### F-3010

Size: 900x900x2000mm

Glass/玻璃: 6mm/8mm

Material/材质: SS304

Color/颜色: mirror polished/gold/black/rose gold  
镜光/钛金/哑黑/玫瑰金



The elegant art of living is shown, the personalized way of life is publicized, and there is no incumbrance and burden, to release the flamboyance of life and bring about extreme simplicity. Behind the turned gorgeousness every time, the living minimalist is hidden.

展现优雅的生活艺术，张扬个性的生活之道，没有丝毫累赘与负担，为生活释去那一抹艳丽，带来简约极致。每一次华丽转身的背后，蕴藏着极简生活主义。



### F-3012

Size: 900x900x2000mm

Glass/玻璃: 6mm/8mm

Material/材质: SS304

Color/颜色: mirror polished/gold/black/rose gold  
镜光/钛金/哑黑/玫瑰金



### F-3013

Size: 800x1200x2000mm

Glass/玻璃: 6mm/8mm

Material/材质: SS304

Color/颜色: mirror polished/gold/black/rose gold

镜光/钛金/哑黑/玫瑰金



### F-3014

Glass/玻璃: 8mm/10mm

Material/材质: SS304

Color/颜色: mirror polished/gold/black/rose gold

镜光/钛金/哑黑/玫瑰金





## F-3014A

Size: 800x1200x2000mm

Glass/玻璃: 8mm/10mm

Material/材质: SS304

Color/颜色: mirror polished/gold/black/rose gold

镜光/钛金/哑黑/玫瑰金

The still and dynamic expressions  
of time outline a beautiful space consisting  
of straight lines and curves.

In spite of no splendiddness,  
It actually has the greatest shape,  
Just like even simple life can be colorful.

在这里，  
时间被静与动雕琢，  
优美地规划出了一个直与曲的空间。  
没有华丽，看似平淡。  
却是华丽，看似平淡。  
却是最极至造型的终极皈依。  
就象生活，透过简单。  
却看到了色彩斑斓.....

## F-3015A

Size: 800x1200x2000mm

Glass/玻璃: 8mm/10mm

Material/材质: SS304

Color/颜色: mirror polished/gold/black/rose gold

镜光/钛金/哑黑/玫瑰金



HARDWARE ACCESSORIES SERIES  
五金配件系列

Good bathroom can give you the perfect full-power enjoyment, and also can improve life to higher level.

Its duty is to create a healthy  
and clean environment.

obligation It is not made just for cleaning the body, but more for  
cleaning the heart.



**LS-667**  
规格: 8mmX15mmX1000mm  
颜色: 沙漠金



**LS-668**  
规格: 15mmX16mmX1000mm  
颜色: 枪灰拉丝



**LS-669**  
规格: 10mmX15mmX1000mm  
颜色: 哑黑



**LS-670**  
规格: 10mmX20mmX1000mm  
颜色: 枪灰拉丝



**LS-671**  
规格:  $\phi$  12mmX1000mm  
颜色: 枪灰拉丝



**LS-672**  
规格: 12.7mmX12.7mmX1000mm  
颜色: 枪灰拉丝



**LS-673**  
规格: 10mmX20mmX1000mm  
颜色: 哑黑



**LS-674**  
规格: 10mmX20mmX1000mm  
颜色: 枪灰拉丝



**LS-675**  
规格: 10mmX15mmX1000mm  
颜色: 哑黑



**LS-676**  
规格: 10mmX15mmX1000mm  
颜色: 枪灰拉丝



**LS-677**  
规格: 10mmX10mmX1000mm  
颜色: 枪灰拉丝



**LS-678**  
规格:  $\phi$  16mmX1000mm  
颜色: 枪灰拉丝



**LS-679**  
规格: 8mmX12mmX80mmX1000mm  
颜色: 枪灰拉丝



**LS-680**  
规格: 10mmX10mmX1000mm  
颜色: 枪灰拉丝



**LS-681**  
规格: 10mmX20mmX300mmX1000mm  
颜色: 枪灰拉丝



**LS-682**  
规格: 15mmX16mmX1000mm  
颜色: 枪灰拉丝



**LS-683**  
规格: 10mmX20mmX1000mm  
颜色: 枪灰拉丝



**LS-684**  
规格: 8mmX12mmX1000mm  
颜色: 枪灰拉丝



**LS-685**  
规格: 11mmX16mmX1000mm  
颜色: 砂光



**LS-686**  
规格: 10mmX12mmX500mm  
颜色: 沙漠金



**LS-687**  
规格: 10mmX15mmX500mm  
颜色: 沙漠金



**LS-688**  
规格: 10mmX15mmX500mm  
颜色: 沙漠金



**LS-689**  
规格: 10mmX20mmX500mm  
颜色: 沙漠金



**LS-690**  
规格:  $\phi$  10mmX500mm  
颜色: 沙漠金

拉手系列  
HANDLE SERIES



**LS-691**

规格:  $\phi$  10mmX500mm  
颜色: 沙漠金



**LS-692**

规格: 13mmX20mmX500mm  
颜色: 枪灰拉丝



**LS-693**

规格: 19mmX19mmX500mm  
颜色: 枪灰拉丝



**LS-694**

规格: 15mmX16mmX500mm  
颜色: 沙漠金



**LS-695**

规格: 15mmX22mmX440mm  
颜色: 枪灰拉丝



**LS-696**

规格: 10mmX15mmX500mm  
颜色: 枪灰拉丝



**LS-697**

规格: 10mmX15mmX500mm  
颜色: 枪灰拉丝



**LS-698**

规格:  $\phi$  16mmX440mm  
颜色: 哑黑



**LS-699**

规格: 11mmX16mmX500mm  
颜色: 枪灰拉丝



**LS-700**

规格: 10mmX20mmX500mm  
颜色: 枪灰拉丝



**LS-701**

规格: 8mmX15mmX500mm  
颜色: 枪灰拉丝



**LS-702**

规格: 13mmX25mmX500mm  
颜色: 枪灰拉丝



**LS-703**

规格: 10mmX15mmX500mm  
颜色: 哑黑



**LS-704**

规格: 12.7mmX12.7mmX500mm  
颜色: 哑黑



**LS-705**

规格: 10mmX20mmX500mm  
颜色: 枪灰拉丝



**LS-706**

规格: 10mmX20mmX440mm  
颜色: 枪灰拉丝



**LS-707**

规格: 11mmX16mmX500mm  
颜色: 哑黑



**LS-708**

规格: 10mmX20mmX500mm  
颜色: 枪灰拉丝



**LS-709**

规格: 10mmX20mmX500mm  
颜色: 枪灰拉丝



**LS-710**

规格: 10mmX15mmX500mm  
颜色: 哑黑



**LS-711**

规格: 10mmX20mmX440mm  
颜色: 哑白



**LS-712**

规格: 10mmX20mmX440mm  
颜色: 哑黑



**LS-713**

规格: 10mmX25mmX440mm  
颜色: 哑黑



**LS-714**

规格: 10mmX30mmX440mm  
颜色: 哑黑



**LS-715**

规格: 10mmX20mmX440mm  
颜色: 哑黑



**LS-716**

规格: 13mmX25mmX440mm  
颜色: 镜光



**LS-717**

规格: 10mmX10mmX500mm  
颜色: 哑黑+黄



**LS-718**

规格: 10mmX10mmX500mm  
颜色: 枪灰拉丝+黄



**LS-719**

规格: 10mmX10mmX500mm  
颜色: 枪灰拉丝+红



**LS-720**

规格: 15mmX22mmX500mm  
颜色: 镜光



**LS-721**

规格: 15mmX16mmX500mm  
颜色: 沙漠金



**LS-722**

规格: 15mmX16mmX500mm  
颜色: 沙漠金

拉手系列  
HANDLE SERIES



**LS-723**  
规格: 11mmX16mmX500mm  
颜色: 哑黑



**LS-724**  
规格: 12.7mmX12.7mmX300mm  
颜色: 枪灰拉丝



**LS-725**  
规格: 10mmX15mmX200mm  
颜色: 哑黑



**LS-726**  
规格: 15mmX16mmX300mm  
颜色: 哑黑



**LS-727**  
规格: 10mmX20mmX300mm  
颜色: 哑黑



**LS-626**  
规格: 10mmx30mmx440mm  
材质: 不锈钢 弧形  
表面处理: 亮光



**LS-628**  
规格: 15mmx30mmx440mm  
材质: 不锈钢 U型一字  
表面处理: 亮光



**LS-634**  
规格: 15mmx40mmx440mm  
材质: 不锈钢  
表面处理: 雅黑



**LS-637**  
规格: 10x30x300x450  
材质: 不锈钢 圆头L型  
表面处理: 亮光



**LS-638**  
规格: 10x30x300x450mm  
材质: 不锈钢 弧形L型  
表面处理: 亮光



**LS-639**  
规格: 25x300x450mm  
材质: 不锈钢 L型  
表面处理: 亮光



**LS-640**  
规格: 13mmX25mmX225mmX425mm  
颜色: 镜光



**LS-642**  
规格: 10x30x300x440mm  
材质: 不锈钢 弧形对碰  
表面处理: 亮光



**LS-644**  
规格: 10mmx30mmx300/440mm  
材质: 不锈钢 弧形对碰  
表面处理: 亮光



**LS-655**  
规格: 10mmx25mmx145mm  
材质: 不锈钢 弧形  
表面处理: 亮光



**LS-658**  
规格: 15mmx30mmx145mm  
材质: 不锈钢 U型一字  
表面处理: 亮光

壁龛定制



石基系列 STONE SERIES



PVC901



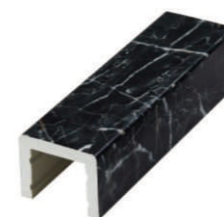
PVC904



PVC907



PVC909



PVC910



PVC912



PVC913



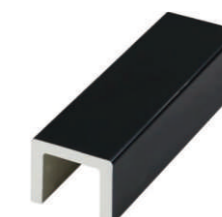
PVC914



PVC917



PVC919



PVC920



PVC921

浴室夹系列  
SHOWER HINGE SERIES



**HY-111-135°**

材料: 不锈钢  
Material: SS304



**HY-111-180°**

材料: 不锈钢  
Material: SS304



**HY-111-90° A**

材料: 不锈钢  
Material: SS304



**HY-111-90°**

材料: 不锈钢  
Material: SS304



**HY-113-135°**

材料: 不锈钢  
Material: SS304



**HY-113-180°**

材料: 不锈钢  
Material: SS304



**HY-113-90° A**

材料: 不锈钢  
Material: SS304



**HY-113-90°**

材料: 不锈钢  
Material: SS304



**HY-114-180°**

材料: 不锈钢  
Material: SS304



**HY-115-180°**

材料: 不锈钢  
Material: SS304



**JM-207-90°**

材料: 黄铜  
Material: Brass



**JM-207-90° A**

材料: 黄铜  
Material: Brass



**JM-207-135°**

材料: 黄铜  
Material: Brass



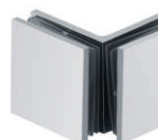
**JM-207-0°**

材料: 黄铜  
Material: Brass



**JM-208-0°**

材料: 不锈钢  
Material: SS304



**JM-208-90° A**

材料: 不锈钢  
Material: SS304



**JM-208-90°**

材料: 不锈钢  
Material: SS304



**JM-208-135°**

材料: 不锈钢  
Material: SS304



**JM-208-180°**

材料: 不锈钢  
Material: SS304



**JM-209-0°**

材料: 不锈钢  
Material: SS304



**JM-209-90°**

材料: 不锈钢  
Material: SS304



**JM-209-90° A**

材料: 不锈钢  
Material: SS304



**JM-209-135°**

材料: 不锈钢  
Material: SS304



**JM-209-180°**

材料: 不锈钢  
Material: SS304



**JM-209-90° B**

材料: 不锈钢  
Material: SS304



**WJ-301**

材料: 不锈钢  
Material: SS304



**WJ-302**

材料: 不锈钢  
Material: SS304



**WJ-303**

材料: 不锈钢  
Material: SS304



**WJ-304**

材料: 不锈钢  
Material: SS304



**WJ-305**

材料: 不锈钢  
Material: SS304



**WJ-306**

材料: 不锈钢  
Material: SS304



**WJ-307**

材料: 不锈钢  
Material: SS304



**WJ-308**

材料: 不锈钢  
Material: SS304



**WJ-309**

材料: 不锈钢  
Material: SS304



**WJ-310**

材料: 不锈钢  
Material: SS304



**WJ-311**

材料: 不锈钢  
Material: SS304



**WJ-312**

材料: 不锈钢  
Material: SS304



**WJ-313**

材料: 不锈钢  
Material: SS304



**WJ-314**

材料: 不锈钢  
Material: SS304



**WJ-315**

材料: 不锈钢  
Material: SS304



**WJ-316**

材料: 不锈钢  
Material: SS304



**WJ-317**

材料: 不锈钢  
Material: SS304



**WJ-318**

材料: 不锈钢  
Material: SS304



**WJ-319**

材料: 不锈钢  
Material: SS304



**WJ-320**

材料: 不锈钢  
Material: SS304



**WJ-321**

材料: 不锈钢  
Material: SS304



**WJ-322**

材料: 黄铜、锌合金  
Material: Brass/Zink alloy



**WJ-323**

材料: 黄铜、锌合金  
Material: Brass/Zink alloy



**WJ-324**

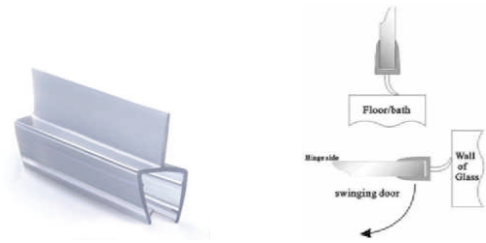
材料: 黄铜、锌合金  
Material: Brass/Zink alloy



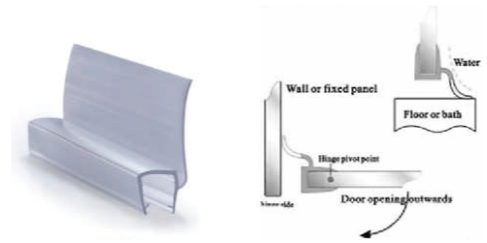
**WJ-325**

材料: 黄铜、锌合金  
Material: Brass/Zink alloy

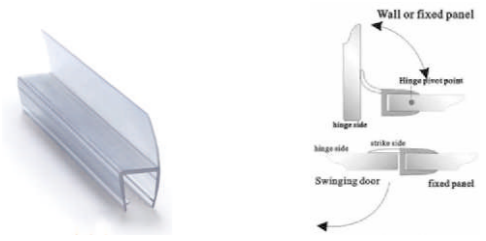
胶条系列 RUBBER SERIES



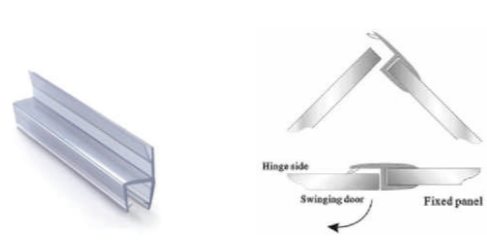
**H001**  
6\8\10\12mm



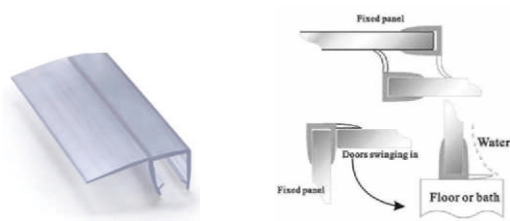
**H002**  
6\8\10mm



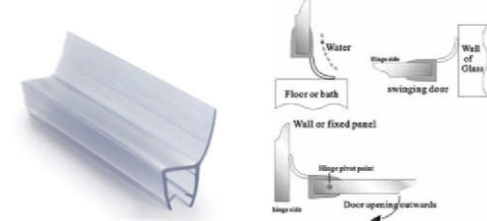
**H003 180°**  
6\8\10\12mm



**H003A 180°**  
6\8\10\12mm



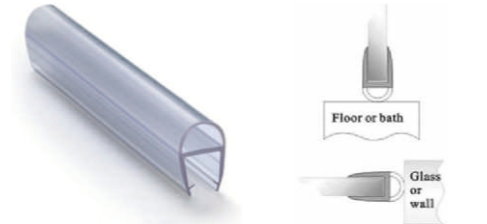
**H004**  
6\8\10\12mm



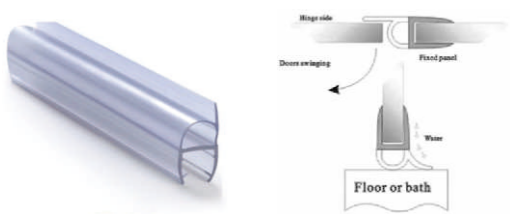
**H005 135°**  
6\8\10\12mm



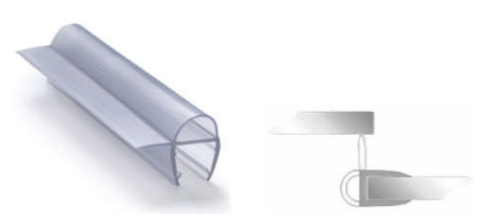
**H005D 135°**  
6\8\10mm



**H007**  
6\8\10\12mm



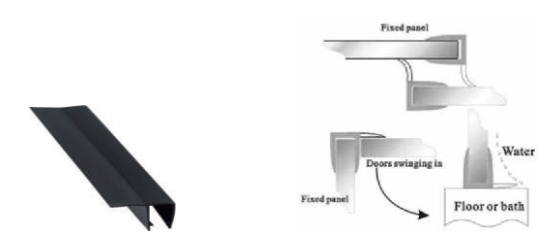
**H007B 135° 180°**  
8\10mm



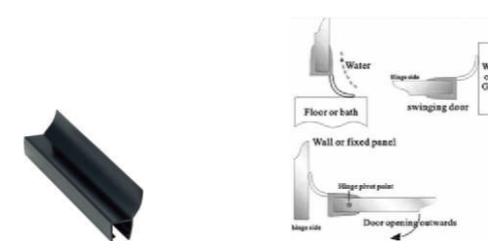
**H007A**  
8\10mm



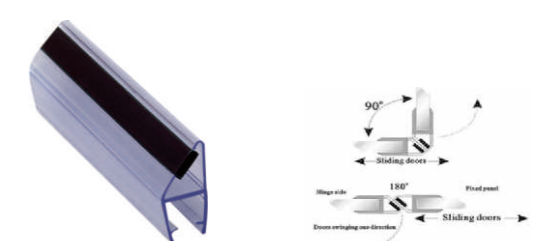
**B003 180°**  
6\8\10\12mm



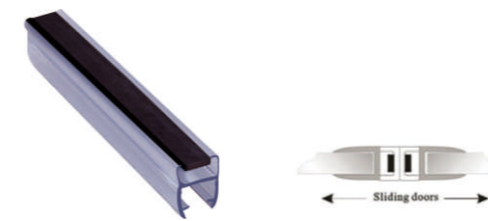
**B004**  
6\8\10\12mm



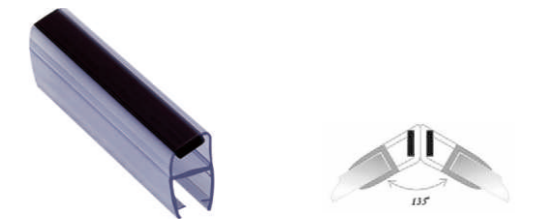
**B005 135°**  
6\8\10\12mm



**H008A 90° 180°**  
4\5\6\8\10\12mm



**H008B 180°**  
6\8\10\12mm



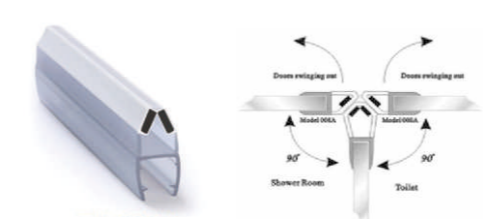
**H008C 135°**  
6\8\10\12mm



**H008S**  
6\8mm



**H008F**  
6\8mm

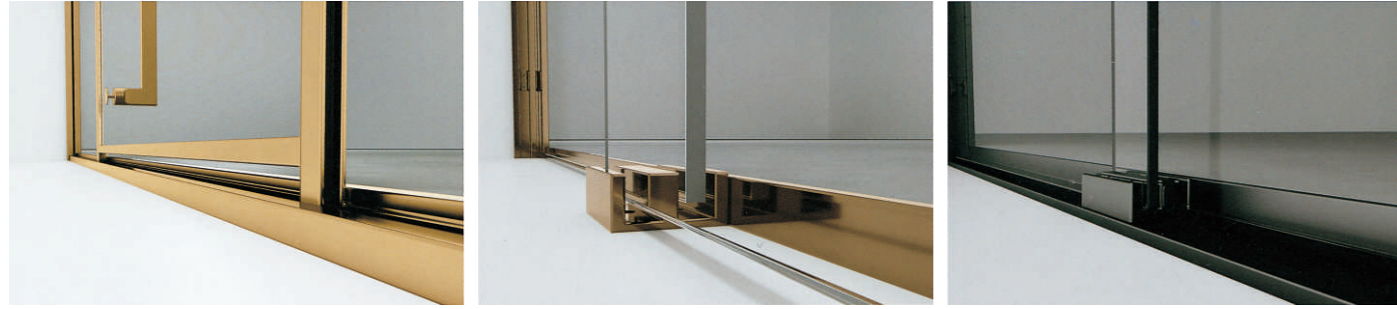


**H008V**  
10\12mm

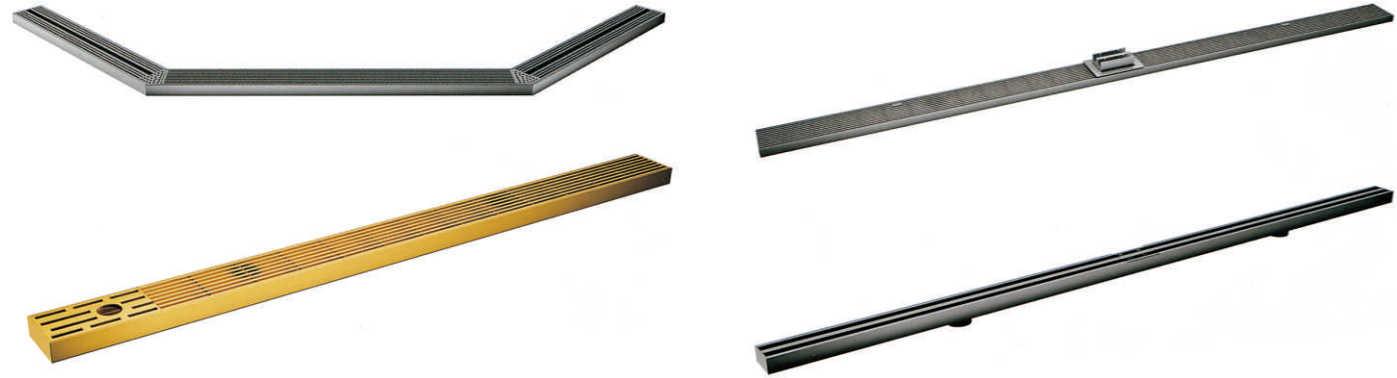


**H008E 135° 180°**  
6\8\10mm

## 下沉式



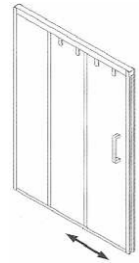
## 无障碍地漏



## 联动门可非标定制形状尺寸



长方形联动门  
非标范围 Custom-made range  
W:950-1800mm L:900-1500mm  
H:1900-2200mm

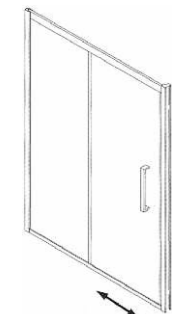


屏风联动门  
非标范围 Custom-made range  
W:950-1800mm  
H:1900-2200mm



U型联动门  
非标范围 Custom-made range  
W:950-1800mm L:900-1500mm  
H:1900-2200mm

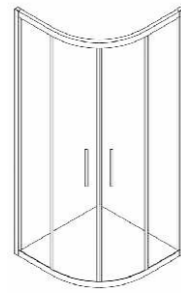
## 单轨推拉门可非标定制形状尺寸



一固一活屏风推拉门  
非标范围 Custom-made range  
W:1200-1600mm  
H:1900-2200mm



二固二活屏风推拉门  
非标范围 Custom-made range  
W:1500-2000mm  
H:1900-2200mm

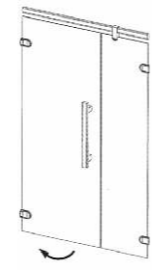


二固二活扇型推拉门  
非标范围 Custom-made range  
W:750-1500mm L:750-1500mm  
H:1900-2200mm

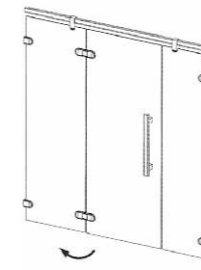


二固二活方型推拉门  
非标范围 Custom-made range  
W:900-1300mm L:900-1300mm  
H:1900-2200mm

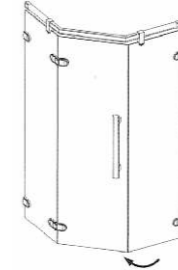
## 平开门可非标定制尺寸



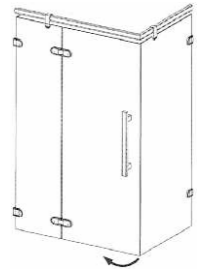
一固一活屏风开门  
非标范围 Custom-made range  
W:950-1700mm  
H:1900-2200mm



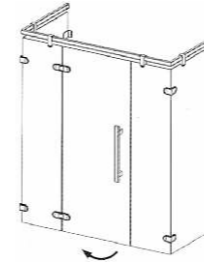
二固一活屏风开门  
非标范围 Custom-made range  
W:1400-2100mm  
H:1900-2200mm



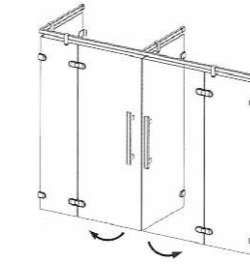
二固一活钻石型开门  
非标范围 Custom-made range  
W:750-1500mm L:750-1500mm  
H:1900-2200mm



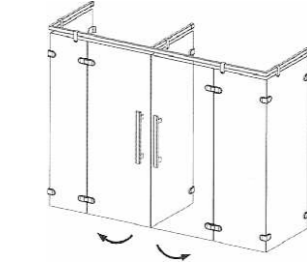
二固一活长方形开门  
非标范围 Custom-made range  
W:750-1350mm L:1200-1700mm  
H:1900-2200mm



四固一活U型开门  
非标范围 Custom-made range  
W:750-1350mm L:1200-1700mm  
H:1900-2200mm

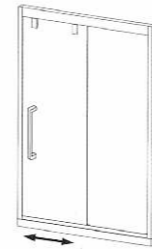


四固一活F型开门  
非标范围 Custom-made range  
W:750-1350mm L:2000-3000mm  
H:1900-2200mm

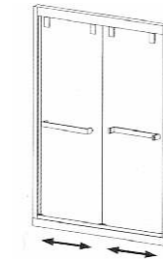


五固一活E型开门  
非标范围 Custom-made range  
W:750-1350mm L:2000-3000mm  
H:1900-2200mm

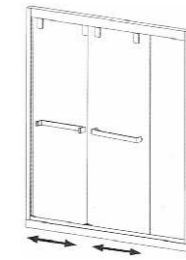
## 双轨推拉门可非标定制形状尺寸



一固一活屏风推拉门  
非标范围 Custom-made range  
W:1200-1850mm  
H:1900-2200mm



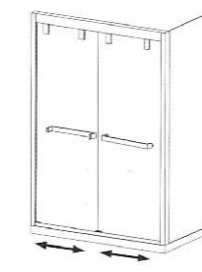
双活屏风推拉门  
非标范围 Custom-made range  
W:1200-1850mm  
H:1900-2200mm



一固二活屏风推拉门  
非标范围 Custom-made range  
W:1500-2300mm  
H:1900-2200mm



二固二活屏风推拉门  
非标范围 Custom-made range  
W:1500-2300mm  
H:1900-2200mm



一固二活长方形推拉门  
非标范围 Custom-made range  
W:1200-1800mm L:600-1500mm  
H:1900-2200mm



二固二活U型推拉门  
非标范围 Custom-made range  
W:1200-1800mm L:600-1500mm  
H:1900-2200mm